

Tubulin β (4D9) monoclonal antibody-HRP

Catalog: BCP6610

Host: Mouse

Reactivity: Human, Mouse, Rabbit, Frog,
Fish, Chicken, Rat

BackGround:

Microtubules are constituent parts of the mitotic apparatus, cilia, flagella, and elements of the cytoskeleton. They consist principally of 2 soluble proteins, alpha- and beta-tubulin, each of about 55,000 Da.

Antibodies against beta Tubulin are useful as loading controls for Western Blotting. However it should be noted that levels of beta Tubulin may not be stable in certain cells.

Product:

1mg/ml in PBS with 0.02% sodium azide, 50% glycerol, pH7.2

Molecular Weight:

~ 55 kDa

Swiss-Prot:

Q13509/P04350/P68371/P07437/Q13885/Q9BUF5

Purification&Purity:

The antibody was affinity-purified from mouse ascites by affinity-chromatography using epitope-specific immunogen and the purity is > 95% (by SDS-PAGE).

Applications:

WB: 1:10000

IHC: 1:100~1:1000

Storage&Stability:

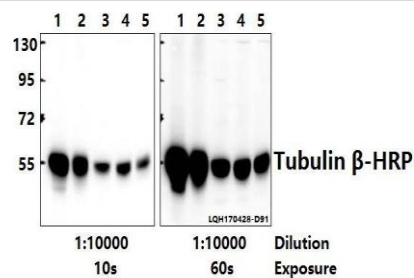
Store at 4 °C short term. Aliquot and store at -20 °C long

term. Avoid freeze-thaw cycles.

Specificity:

Tubulin β (4D9) mAb detects endogenous levels of β -Tubulin protein.

DATA:



Western blot (WB) analysis of Tubulin β (4D9) monoclonal antibody-HRP at 1:10000 dilution

Lane1:The Brain tissue lysate of Rat(10ug)

Lane2:The Brain tissue lysate of Mouse(10ug)

Lane3:PC12 whole cell lysate(10ug)

Lane4:BV2 whole cell lysate(10ug)

Lane5:A549 whole cell lysate(10ug)

Note:

For research use only, not for use in diagnostic procedure.