

PRODUCT DATA SHEET

COMPLEX

Complex Biotech Co., Ltd

CD371 Recombinant Protein

Catalog: BCP3574

Host: E.coli

Tag:

His-tag;Sumo-Tag

BackGround:

Part of the NK gene complex, C-type lectin-like molecule 1 (MICL/DCAL-2/CLL-1/CLEC12A) encodes a type-II transmembrane glycoprotein whose expression is largely restricted to hematopoietic cells of the myeloid lineage such as monocytes, macrophages, dendritic cells, and neutrophils. Research studies have shown that CLL-1 possesses a single C-type lectin-like domain within the extracellular domain and a single ITIM motif within its short cytoplasmic tail, which facilitates association with inhibitory SH2 domain-containing tyrosine phosphatases, SHP-1 and SHP-2. It is thought that signaling through the ITIM motif of CLL-1 facilitates inhibition of myeloid cell activation. By serving as a receptor for DAMPs that become exposed on dead cells, such as uric acid crystals, CLL-1 restrains pro-inflammatory immune responses that occur in response to cell death. In addition to being expressed on normal differentiated myeloid cells, research studies have also demonstrated expression of CLL-1 on the surface of malignant myeloid cells. As a result, CLL-1 has received significant attention as a potential novel therapeutic target for AML as its expression is absent from normal hematopoietic stem cells but is highly over-expressed on AML stem cells.

Product:

4M Urea, PH7.4

Molecular Weight:

~45kDa

Swiss-Prot:

Q5QGZ9

Purification&Purity:

Transferred into competent cells and the supernatant was purified by NI column affinity chromatography and the purity is > 85% (by SDS-PAGE).

Restriction Sites:

BamHI-XhoI

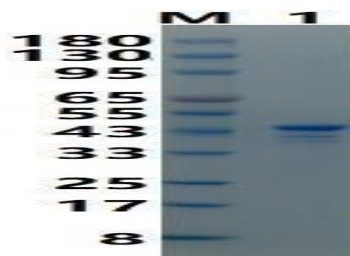
Storage&Stability:

Store at 4 °C short term. Aliquot and store at -20 °C long term. Avoid freeze-thaw cycles.

Expression Vector:

pSmart-I

DATA:



Note:

For research use only, not for use in diagnostic procedure.