

PRODUCT DATA SHEET

COMPLEX

Complex Biotech Co., Ltd

CD368 Recombinant Protein

Catalog: BCP3522

Host: E.coli

Tag: His-tag

BackGround:

Calcium-dependent lectin that acts as a pattern recognition receptor (PRR) of the innate immune system: recognizes damage-associated molecular patterns (DAMPs) of pathogen-associated molecular patterns (PAMPs) of bacteria and fungi. The PAMPs include alpha-mannans on C.albicans hyphae and mycobacterial trehalose 6,6'-dimycolate (TDM). Interacts with signaling adapter Fc receptor gamma chain/FCER1G, likely via CLEC4E, to form a functional complex in myeloid cells. Binding of mycobacterial TDM or C.albicans alpha-mannans to this receptor complex leads to phosphorylation of the immunoreceptor tyrosine-based activation motif (ITAM) of FCER1G, triggering activation of SYK, CARD9 and NF-kappa-B, consequently driving maturation of antigen-presenting cells and shaping antigen-specific priming of T-cells toward effector T-helper 1 and T-helper 17 cell subtypes. The heterodimer formed with CLEC6A is active against fungal infection. Functions as an endocytic receptor. May be involved in antigen uptake at the site of infection, either for clearance of the antigen, or for processing and further presentation to T-cells.

Product:

PBS, 4M Urea, PH7.4

Molecular Weight:

~19kDa

Swiss-Prot:

Q8WXI8

Purification&Purity:

Transferred into competent cells and the supernatant was purified by NI column affinity chromatography and the purity is > 85% (by SDS-PAGE).

Restriction Sites:

NdeI-XhoI

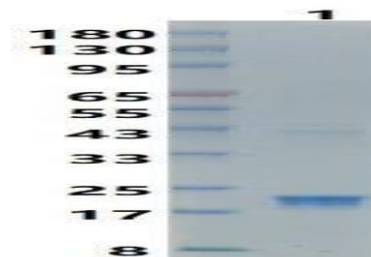
Storage&Stability:

Store at 4 °C short term. Aliquot and store at -20 °C long term. Avoid freeze-thaw cycles.

Expression Vector:

pet-22b(+)

DATA:



Note:

For research use only, not for use in diagnostic procedure.