

PRODUCT DATA SHEET

COMPLEX

Complex Biotech Co., Ltd

CD300A Recombinant Protein

Catalog: BCP3520

Host: E.coli

Tag: His-tag

BackGround:

CD300a is an inhibitory receptor in the Ig superfamily, a type I transmembrane protein containing immunoreceptor tyrosine-based inhibitory motifs (ITIMs) on its cytoplasmic tail. Human CD300a (CMRF-35H, IRp60) and mouse CD300a (CLM-8, LMIR-1, MAIR-I) are functional orthologs, expressed by monocytes, granulocytes, mast cells, and subsets of B cells. Human, but not mouse, CD300a is also expressed by unstimulated NK cells and subsets of T cells. Phosphorylated ITIMs are able to recruit different phosphatases, such as SHP-1 and SHP-2, leading to inhibition of cell activation.

Product:

PBS, 4M Urea, PH7.4

Molecular Weight:

~23kDa

Swiss-Prot:

Q9UGN4

Purification&Purity:

Transferred into competent cells and the supernatant was purified by NI column affinity chromatography and the

purity is > 85% (by SDS-PAGE).

Restriction Sites:

NdeI-XhoI

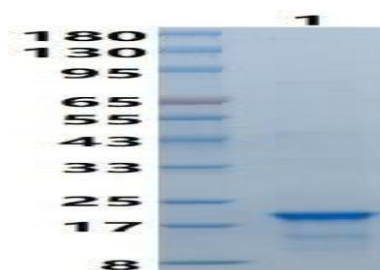
Storage&Stability:

Store at 4 °C short term. Aliquot and store at -20 °C long term. Avoid freeze-thaw cycles.

Expression Vector:

pet-22b(+)

DATA:



Note:

For research use only, not for use in diagnostic procedure.