

PRODUCT DATA SHEET

COMPLEX

Complex Biotech Co., Ltd

CD326 Recombinant Protein

Catalog: BCP3511

Host: E.coli

Tag: His-tag

BackGround:

Epithelial cell adhesion and activating molecule (EpCAM/CD326) is a transmembrane glycoprotein that mediates Ca²⁺-independent, homophilic adhesions on the basolateral surface of most epithelial cells. EpCAM is not expressed in adult squamous epithelium, but it is highly expressed in adeno and squamous cell carcinomas. Research studies identified EpCAM as one of the first tumor-associated antigens, and it has long been a marker of epithelial and tumor tissue. Investigators have shown that EpCAM is highly expressed in cancer cells.

Product:

PBS, 4M Urea, PH7.4

Molecular Weight:

~32kDa

Swiss-Prot:

P16422

Purification&Purity:

Transferred into competent cells and the supernatant was purified by NI column affinity chromatography and the

purity is > 85% (by SDS-PAGE).

Restriction Sites:

NdeI-XhoI

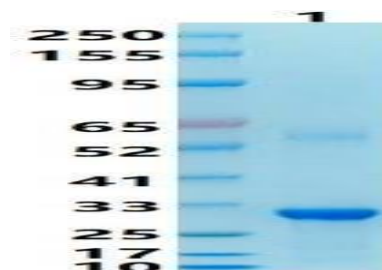
Storage&Stability:

Store at 4 °C short term. Aliquot and store at -20 °C long term. Avoid freeze-thaw cycles.

Expression Vector:

pet-22b(+)

DATA:



Note:

For research use only, not for use in diagnostic procedure.