

# PRODUCT DATA SHEET

**COMPLEX**

Complex Biotech Co., Ltd

## CD274 Recombinant Protein

Catalog: BCP3501

Host: E.coli

Tag: His-tag

### BackGround:

Programmed cell death 1 ligand 1 (PD-L1, B7-H1, CD274) is a member of the B7 family of cell surface ligands that regulate T cell activation and immune responses. The PD-L1 ligand binds the PD-1 transmembrane receptor and inhibits T cell activation. PD-L1 was discovered following a search for novel B7 protein homologs and was later shown to be expressed by antigen presenting cells, activated T cells, and tissues including placenta, heart, and lung. Similar in structure to related B7 family members, PD-L1 protein contains extracellular IgV and IgC domains and a short, cytoplasmic region. Research studies demonstrate that PD-L1 is expressed in several tumor types, including melanoma, ovary, colon, lung, breast, and renal cell carcinomas. Expression of PD-L1 in cancer is associated with tumor-infiltrating lymphocytes, which mediate PD-L1 expression through the release of interferon gamma. Additional research links PD-L1 expression to cancers associated with viral infections.

### Product:

PBS, 4M Urea, PH7.4

### Molecular Weight:

~30kDa

### Swiss-Prot:

Q9NZQ7

### Purification&Purity:

Transferred into competent cells and the supernatant was purified by NI column affinity chromatography and the purity is > 85% (by SDS-PAGE).

### Restriction Sites:

NdeI-XhoI

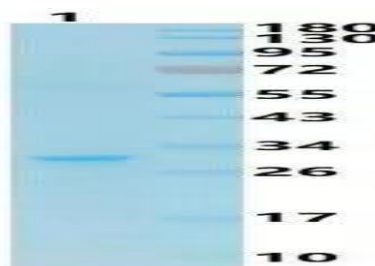
### Storage&Stability:

Store at 4 °C short term. Aliquot and store at -20 °C long term. Avoid freeze-thaw cycles.

### Expression Vector:

pet-22b(+)

### DATA:



### Note:

For research use only, not for use in diagnostic procedure.