

# PRODUCT DATA SHEET

**COMPLEX**

Complex Biotech Co., Ltd

## CD327 Recombinant Protein

Catalog: BCP3460

Host: E.coli

Tag: His-tag

His-tag

### BackGround:

Two families of mammalian lectin-like adhesion molecules, the selectins and the sialoadhesins, bind glycoconjugate ligands in a sialic acid-dependent manner. The sialic acid-binding immunoglobulin superfamily lectins, designated Siglecs or sialoadhesins, recognize sialylated ligands and play a key role in mediating sialic-acid dependent binding to cells. Siglec-6, also called obesitybinding protein 1, is an adhesion molecule that is highly expressed in placental trophoblasts, as well as in peripheral blood leukocytes. Siglec-6 can bind both N-acetylneuraminic acid (Neu5Ac) and N-glycolylneuraminic acid (Neu5Gc), the two common sialic acids found in mammalian cells. Together with the other members of the Siglec family, Siglec-6 promotes cell-cell interactions and plays a roll in the innate and adaptive immune systems through glycan recognition.

### Product:

PBS, 4M Urea, PH7.4

### Molecular Weight:

~35kDa

### Swiss-Prot:

O43699

### Purification&Purity:

Transferred into competent cells and the supernatant was purified by NI column affinity chromatography and the purity is > 85% (by SDS-PAGE).

### Restriction Sites:

NdeI-XhoI

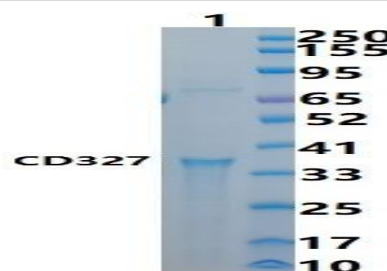
### Storage&Stability:

Store at 4 °C short term. Aliquot and store at -20 °C long term. Avoid freeze-thaw cycles.

### Expression Vector:

pet-22b(+)

### DATA:



### Note:

For research use only, not for use in diagnostic procedure.