

CD9 polyclonal antibody

Catalog: BCP01749

Host: Rabbit

Reactivity: Human

BackGround:

Integral membrane protein associated with integrins, which regulates different processes, such as sperm-egg fusion, platelet activation and aggregation, and cell adhesion. Present at the cell surface of oocytes and plays a key role in sperm-egg fusion, possibly by organizing multi-protein complexes and the morphology of the membrane required for the fusion (By similarity). In myoblasts, associates with CD81 and PTGFRN and inhibits myotube fusion during muscle regeneration (By similarity). In macrophages, associates with CD81 and beta-1 and beta-2 integrins, and prevents macrophage fusion into multinucleated giant cells specialized in ingesting complement-opsonized large particles. Also prevents the fusion between mononuclear cell progenitors into osteoclasts in charge of bone resorption (By similarity). Acts as a receptor for PSG17 (By similarity). Involved in platelet activation and aggregation. Regulates paranodal junction formation (By similarity). Involved in cell adhesion, cell motility and tumor metastasis.

Product:

Rabbit IgG, 1mg/ml in PBS with 0.02% sodium azide, 50% glycerol, pH7.2.

Molecular Weight:

~ 26 kDa

Swiss-Prot:

P21926

Purification&Purity:

The antibody was affinity-purified from rabbit antiserum by affinity-chromatography using epitope-specific im-

munogen and the purity is > 95% (by SDS-PAGE).

Applications:

WB: 1:1000~1:2000

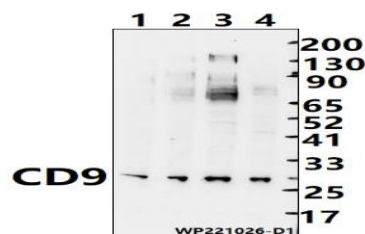
Storage&Stability:

Store at 4 °C short term. Aliquot and store at -20 °C long term. Avoid freeze-thaw cycles.

Specificity:

CD9 polyclonal antibody detects endogenous levels of CD9 protein.

DATA:



Western blot (WB) analysis of CD9 polyclonal antibody at 1:1000 dilution

Lane1:EC9706 whole cell lysate(30ug)

Lane2:L02 whole cell lysate(30ug)

Lane3:A549 whole cell lysate(30ug)

Lane4:MCF-7 whole cell lysate(30ug)

Note:

For research use only, not for use in diagnostic procedure.