

Tau (V350) polyclonal antibody

Catalog: BCP01612

Host: Rabbit

Reactivity: Human,Mouse,Rat

BackGround:

Tau, also known as MAPT (microtubule-associated protein tau), MAPTL, MTBT1 or TAU, is a 758 amino acid protein that localizes to the cytoplasm, as well as to the cytoskeleton and the cell membrane, and contains four Tau/MAP repeats. Expressed in neuronal tissue and existing as multiple alternatively spliced isoforms, Tau functions to promote microtubule assembly and stability and is thought to be involved in the maintenance of neuronal polarity. Tau may also link microtubules with neural plasma membrane components and, addition to its role in microtubule stability, is also necessary for cytoskeletal plasticity.

Product:

Rabbit IgG, 1mg/ml in PBS with 0.02% sodium azide, 50% glycerol, pH7.2

Molecular Weight:

50 to 80 kDa

Swiss-Prot:

P10636

Purification&Purity:

The antibody was affinity-purified from rabbit antiserum by affinity-chromatography using epitope-specific immunogen and the purity is > 95% (by SDS-PAGE).

Applications:

WB: 1:500~1:1000

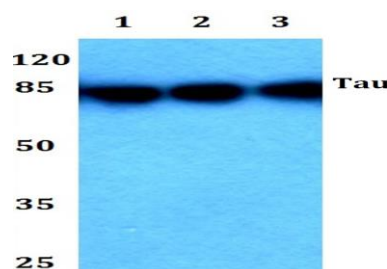
Storage&Stability:

Store at 4 °C short term. Aliquot and store at -20 °C long term. Avoid freeze-thaw cycles.

Specificity:

Tau (V350) polyclonal antibody detects endogenous levels of Tau protein.

DATA:



Western blot (WB) analysis of Tau (V350) polyclonal antibody at 1:500 dilution

Lane1:The Brain tissue lysate of Mouse(40ug)

Lane2:The Brain tissue lysate of Rat(40ug)

Lane3:U251 whole cell lysate(40ug)

Note:

For research use only, not for use in diagnostic procedure.