

## TAF II p68 (N380) polyclonal antibody

Catalog: BCP01597

Host: Rabbit

Reactivity: Human,Mouse,Rat

### BackGround:

TAF II p68, also known as TAF15, RBP56 or TAF2N, is a member of the RNA polymerase II multiprotein complex and is present in certain TFIID subcomplexes. Expressed throughout the body, TAF II p68 is a single stranded RNA binding protein that shares homology with TLS (translocated in liposarcoma) and EWS (Ewing's sarcoma), both of which are proto-oncogenes. Fusion of TAF II p68 with certain transcription factors transforms it into an oncoprotein with oncogenic potential at the N-terminus. When, for example, TAF II p68 is fused with TEC (translocated in extraskeletal chondrosarcoma), the fusion pair acts as an oncoprotein in which TAF II p68 is the transactivation domain. Defects in the gene encoding TAF II p68 are associated with extraskeletal myxoid chondrosarcoma, a malignant soft tumor.

### Product:

Rabbit IgG, 1mg/ml in PBS with 0.02% sodium azide, 50% glycerol, pH7.2

### Molecular Weight:

~ 68 kDa

### Swiss-Prot:

Q92804

### Purification&Purity:

The antibody was affinity-purified from rabbit antiserum by affinity-chromatography using epitope-specific immunogen and the purity is > 95% (by SDS-PAGE).

### Applications:

WB: 1:500~1:1000

IHC: 1:50~1:200

### Storage&Stability:

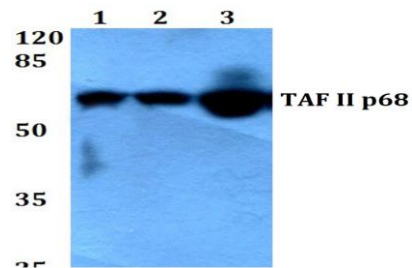
Store at 4 °C short term. Aliquot and store at -20 °C long

term. Avoid freeze-thaw cycles.

### Specificity:

TAF II p68 (N380) polyclonal antibody detects endogenous levels of TAF II protein.

### DATA:



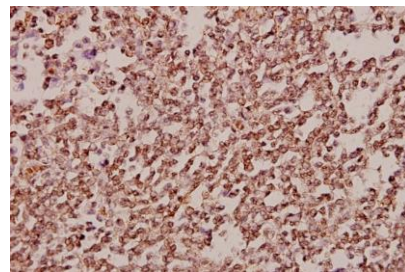
Western blot (WB) analysis of TAF II p68 (N380) pAb at 1:500 dilution

Lane1:3T3-L1 whole cell lysate(40ug)

Lane2:C6 whole cell lysate(40ug)

Lane3:MCF-7 whole cell lysate(40ug)

Lane4:HEK293T whole cell lysate(40ug)



Immunohistochemistry (IHC) analyzes of TAF II p68 (N380) pAb in paraffin-embedded human tonsil carcinoma tissue at 1:50.

### Note:

For research use only, not for use in diagnostic procedure.