

## Synuclein-pan (A19) polyclonal antibody

Catalog: BCP01592

Host: Rabbit

Reactivity: Human, Mouse, Rat

### BackGround:

The synuclein family members, including  $\alpha$ -synuclein (also designated NACP for non- $\beta$  amyloid component) and  $\beta$ -synuclein, are predominantly expressed in the brain and are speculated to be involved in synaptic regulation and neuronal plasticity.  $\alpha$ -synuclein is localized to neuronal cell bodies and synapses.  $\alpha$ -synuclein was first identified as a component of Alzheimer's disease amyloid plaques. Abnormal platelet function in Alzheimer's disease has been demonstrated. During megakaryocytic differentiation  $\alpha$ -synuclein was found to be up-regulated, while  $\beta$ -synuclein is down-regulated, indicating that coordinate expression of synucleins may be important during hematopoietic cell differentiation. A mutant form of  $\alpha$ -synuclein has been found in patients with early onset Parkinson's disease.

### Product:

Rabbit IgG, 1mg/ml in PBS with 0.02% sodium azide, 50% glycerol, pH7.2

### Molecular Weight:

~ 18 kDa

### Swiss-Prot:

P37840/O76070/Q16143

### Purification&Purity:

The antibody was affinity-purified from rabbit antiserum by affinity-chromatography using epitope-specific immunogen and the purity is > 95% (by SDS-PAGE).

### Applications:

WB: 1:500~1:1000

IHC: 1:50~1:200

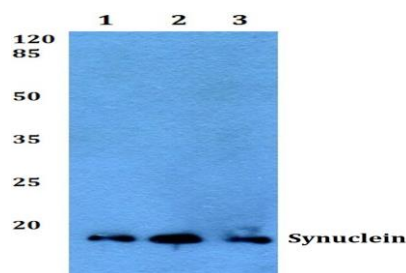
### Storage&Stability:

Store at 4 °C short term. Aliquot and store at -20 °C long term. Avoid freeze-thaw cycles.

### Specificity:

Synuclein-pan (A19) polyclonal antibody detects endogenous levels of Synuclein-pan ( $\alpha$ -synuclein,  $\beta$ -synuclein,  $\gamma$ -synuclein) protein.

### DATA:



Western blot (WB) analysis of Synuclein (A19) pAb at 1:500 dilution

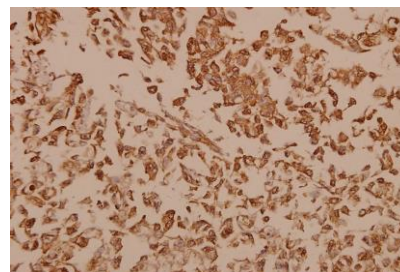
Lane1:Panc1 whole cell lysate(40ug)

Lane2:HEK293T whole cell lysate(40ug)

Lane3:A549 whole cell lysate(40ug)

Lane4:The Brain tissue lysate of Mouse(40ug)

Lane5:The Brain tissue lysate of Rat(40ug)



Immunohistochemistry (IHC) analyzes of Synuclein (A19) pAb in paraffin-embedded human breast carcinoma tissue at 1:50.

### Note:

For research use only, not for use in diagnostic procedure.