

Stat5 (W287) polyclonal antibody

Catalog: BCP01578

Host: Rabbit

Reactivity: Human, Mouse, Rat

Background:

Stat 5a protein is a transcription factor activated by hormone and cytokines. Two highly related, but distinct Stat 5 genes (Stat 5a and Stat 5b) were identified in mouse. The amino acid sequences of Stat 5a and Stat 5b show 96% sequence similarity, and both proteins are co expressed in most tissues of both virgin and lactating mice. However, differential accumulation of Stat 5a and Stat 5b mRNA has been reported for both muscle and mammary tissue. Stat 5a is critically involved in a variety of physiological functions, including reproduction, lactation, immune function and somatic growth.

Product:

Rabbit IgG, 1mg/ml in PBS with 0.02% sodium azide, 50% glycerol, pH7.2

Molecular Weight:

~ 90 kDa

Swiss-Prot:

P42229/P51692

Purification&Purity:

The antibody was affinity-purified from rabbit antiserum by affinity-chromatography using epitope-specific immunogen and the purity is > 95% (by SDS-PAGE).

Applications:

WB: 1:500~1:1000

IHC: 1:50~1:200

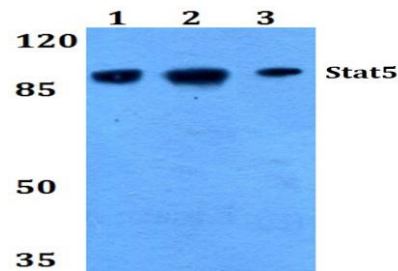
Storage&Stability:

Store at 4 °C short term. Aliquot and store at -20 °C long term. Avoid freeze-thaw cycles.

Specificity:

Stat5 (W287) polyclonal antibody detects endogenous levels of Stat5 protein.

DATA:



Western blot (WB) analysis of Stat5 (W287) pAb at 1:500 dilution

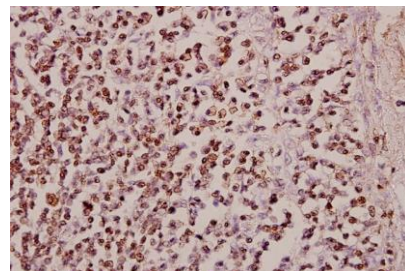
Lane1:PC3 whole cell lysate(40ug)

Lane2:MCF-7 whole cell lysate(40ug)

Lane3:Hela whole cell lysate(40ug)

Lane4:SK-OVCAR3 whole cell lysate(40ug)

Lane5:A549 whole cell lysate(40ug)



Immunohistochemistry (IHC) analyzes of Stat5 (W287) pAb in paraffin-embedded human tonsil carcinoma tissue at 1:50.

Note:

For research use only, not for use in diagnostic procedure.