

SSB (phospho-S366) polyclonal antibody

Catalog: BCP01559

Host: Rabbit

Reactivity: Human

BackGround:

Ro/SSA is a ribonucleoprotein that binds to autoantibodies in 35 to 50% of patients with SLE and in up to 97% of patients with Sjogren syndrome. The Ro/SSA particle consists of a single immunoreactive protein noncovalently bound with one of four small RNA molecules. Most anti-Ro/SSA-positive sera have antibodies not only against the immunoreactive protein, but also against an Ro/SSA protein. The genes which encode the two proteins map to human chromosomes 11p15.5 and 1q31, respectively. La/SSB is an autoimmune RNA-binding protein that plays a role in the transcription of RNA polymerase III was originally defined by its reactivity with autoantibodies from patients with Sjogren syndrome and SLE.

Product:

Rabbit IgG, 1mg/ml in PBS with 0.02% sodium azide, 50% glycerol, pH7.2

Molecular Weight:

~ 52 kDa

Swiss-Prot:

P05455

Purification&Purity:

The antibody was affinity-purified from rabbit antiserum by affinity-chromatography using epitope-specific immunogen and the purity is > 110% (by SDS-PAGE).

Applications:

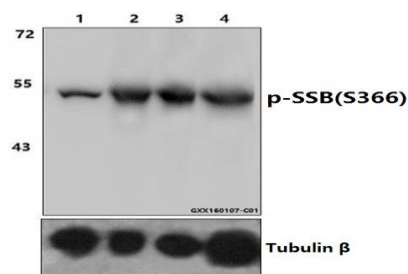
WB: 1:1000~1:2000

Storage&Stability:

Store at 4 °C short term. Aliquot and store at -20 °C long term. Avoid freeze-thaw cycles.

Specificity:

p-SSB (S366) polyclonal antibody detects endogenous levels of SSB protein only when phosphorylated at Serine 366.

DATA:

Western blot (WB) analysis of p-SSB (S366) polyclonal antibody at 1:1000 dilution

Lane1:HEK293T whole cell lysate

Lane2:HEK293T treated with EGF(0.1ng/ml,15min) whole cell lysate

Lane3:HEK293T treated with EGF(0.1ng/ml,30min) whole cell lysate

Lane4:HEK293T treated with EGF(0.1ng/ml,60min) whole cell lysate

Note:

For research use only, not for use in diagnostic procedure.