

Shb (phospho-Y246) polyclonal antibody

Catalog: BCP01509

Host: Rabbit

Reactivity: Human, Mouse

BackGround:

The SH2 (Src Homology 2) domain is a structurally conserved motif that contains two alpha helices and seven beta strands and is found in a variety of proteins that are involved in signal transduction throughout the cell. Specifically, the SH2 domain targets SH2 domain-containing proteins to tyrosinephosphorylated sites, an event that can trigger a protein-protein interaction cascade which may ultimately effect gene expression and cellular function. Shb (SH2 domain-containing adapter protein b), Shd (SH2 domain-containing adapter protein d), She (SH2 domain-containing adapter protein e) and Shf (SH2 domain-containing adapter protein f) are SH2 domain-containing proteins that play various roles throughout the cell.

Product:

Rabbit IgG, 1mg/ml in PBS with 0.02% sodium azide, 50% glycerol, pH7.2

Molecular Weight:

~55kDa

Swiss-Prot:

Q15464

Purification&Purity:

The antibody was affinity-purified from rabbit antiserum

by affinity-chromatography using epitope-specific immunogen and the purity is > 95% (by SDS-PAGE).

Applications:

IHC: 1:50~1:200

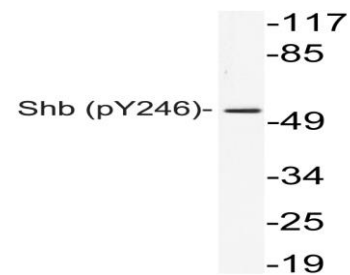
Storage&Stability:

Store at 4 °C short term. Aliquot and store at -20 °C long term. Avoid freeze-thaw cycles.

Specificity:

p-Shb (Y246) polyclonal antibody detects endogenous levels of Shb protein only when phosphorylated at Tyr246.

DATA:



Note:

For research use only, not for use in diagnostic procedure.