

SEN3 (Y24) polyclonal antibody

Catalog: BCP01496

Host: Rabbit

Reactivity: Human, Mouse, Rat

BackGround:

SUMO (small ubiquitin-related modifier), a member of the ubiquitin-like protein family, regulates diverse cellular functions of a variety of target proteins including transcription, DNA repair, nucleocytoplasmic trafficking and chromosome segregation. SUMO precursor proteins undergo cleavage of the residues after the "GG" region by SUMO-specific proteases in maturation. This cleavage of the precursor is a prerequisite for subsequent sumoylation. The sentrin-specific (or SUMO-specific) protease (SEN) proteins belong to the peptidase C48 family and include SENP1-3 and SENP5-8. SENP1, SENP2 and SENP3 degrade UBL1 and SMT3H2 conjugates and subsequently release the monomers from sumoylated substrates.

Product:

Rabbit IgG, 1mg/ml in PBS with 0.02% sodium azide, 50% glycerol, pH7.2

Molecular Weight:

~ 65 kDa

Swiss-Prot:

Q9H4L4

Purification&Purity:

The antibody was affinity-purified from rabbit antiserum by affinity-chromatography using epitope-specific immunogen and the purity is > 95% (by SDS-PAGE).

Applications:

WB: 1:500~1:1000

IHC: 1:50~1:200

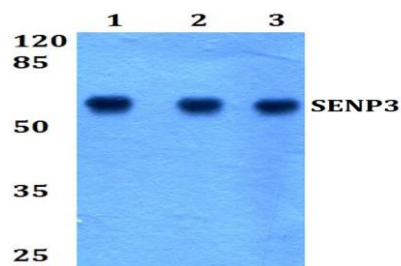
Storage&Stability:

Store at 4 °C short term. Aliquot and store at -20 °C long term. Avoid freeze-thaw cycles.

Specificity:

SEN3 (Y24) polyclonal antibody detects endogenous levels of SENP3 protein.

DATA:



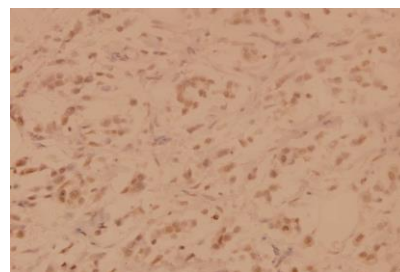
Western blot (WB) analysis of SENP3 (Y24) polyclonal antibody at 1:500 dilution

Lane1:C6 whole cell lysate(40ug)

Lane2:NIH-3T3 whole cell lysate(40ug)

Lane3:HeLa whole cell lysate(40ug)

Lane4: COS-7 whole cell lysate(40ug)



Immunohistochemistry (IHC) analyzes of SENP3 (Y24) pAb in paraffin-embedded human breast carcinoma tissue at 1:100.

Note:

For research use only, not for use in diagnostic procedure.