

**RUNX3 (R182) polyclonal antibody**

Catalog: BCP01485

Host: Rabbit

Reactivity: Human,Mouse,Rat

**BackGround:**

RUNX family members are DNA-binding proteins that regulate the expression of genes involved in cellular differentiation and cell cycle progression. RUNX3 is expressed in cells of hematopoietic origin, including myeloid and B-cell lines and spleen. By playing a role in controlling the growth and differentiation of gastric epithelial cells, RUNX3 is a strong candidate as a gastric cancer tumor suppressor. Specifically, hypermethylation inactivates the gene encoding RUNX3. The detection of hypermethylation at multiple regions within the RUNX3 CpG island may aid in the diagnosis and risk assessment of gastric cancer.

**Product:**

Rabbit IgG, 1mg/ml in PBS with 0.02% sodium azide, 50% glycerol, pH7.2

**Molecular Weight:**

~ 48 kDa

**Swiss-Prot:**

Q13761

**Purification&Purity:**

The antibody was affinity-purified from rabbit antiserum by affinity-chromatography using epitope-specific immunogen and the purity is > 95% (by SDS-PAGE).

**Applications:**

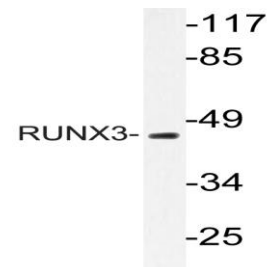
WB: 1:500~1:1000

**Storage&Stability:**

Store at 4 °C short term. Aliquot and store at -20 °C long term. Avoid freeze-thaw cycles.

**Specificity:**

RUNX3 (R182) polyclonal antibody detects endogenous levels of RUNX3 protein.

**DATA:**

Western blot (WB) analysis of RUNX3 (R182) pAb at 1:500 dilution

Lane1:SGC7901 whole cell lysate(40ug)

Lane2:HCT116 whole cell lysate(40ug)

Lane3:AML-12 whole cell lysate(40ug)

Lane4:H9C2 whole cell lysate(40ug)

**Note:**

For research use only, not for use in diagnostic procedure.