

RPS13 (L115) polyclonal antibody

Catalog: BCP01467

Host: Rabbit

Reactivity: Human,Mouse,Rat

BackGround:

Ribosomes, the organelles that catalyze protein synthesis, are composed of a small subunit (40S) and a large subunit (60S) that consist of over 80 distinct ribosomal proteins. Mammalian ribosomal proteins are encoded by multigene families that contain processed pseudogenes and one functional intron-containing gene within their coding regions. Ribosomal Protein S13 (RPS13), also known as 40S ribosomal protein S13, is a 151 amino acid cytoplasmic protein belonging to the Ribosomal Protein S15P family. The gene encoding Ribosomal Protein S13 maps to human chromosome 11p15.1 and mouse chromosome 7 F1 and contains multiple phosphorylated residues. Like most ribosomal proteins, Ribosomal Protein S13 exists as multiple processed pseudogenes that are scattered throughout the genome.

Product:

Rabbit IgG, 1mg/ml in PBS with 0.02% sodium azide, 50% glycerol, pH7.2

Molecular Weight:

~ 17 kDa

Swiss-Prot:

P62277

Purification&Purity:

The antibody was affinity-purified from rabbit antiserum by affinity-chromatography using epitope-specific immunogen and the purity is > 95% (by SDS-PAGE).

Applications:

WB: 1:500~1:1000

IHC: 1:50~1:200

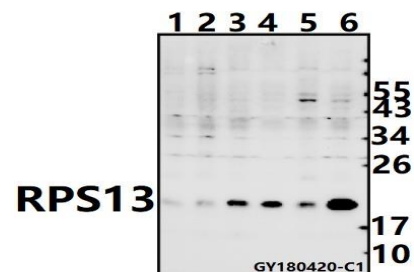
Storage&Stability:

Store at 4 °C short term. Aliquot and store at -20 °C long term. Avoid freeze-thaw cycles.

Specificity:

Ribosomal Protein S13 (L115) polyclonal antibody detects endogenous levels of Ribosomal Protein S13 protein.

DATA:



Western blot (WB) analysis of RPS13 (L115) pAb at 1:500 dilution

Lane1:CT26 whole cell lysate(40ug)

Lane2:PC12 whole cell lysate(40ug)

Lane3:MCF-7 whole cell lysate(40ug)

Lane4:A549 whole cell lysate(40ug)

Lane5:HEK293T whole cell lysate(40ug)

Lane6:SGC7901 whole cell lysate(40ug)

Note:

For research use only, not for use in diagnostic procedure.