

PRPF19 polyclonal antibody

Catalog: BCP01373

Host: Rabbit

Reactivity: Human,Mouse,Rat

BackGround:

The spliceosome, the gigantic molecular machine that performs pre-mRNA splicing in eukaryotes, contains over 200 different proteins and five RNA molecules (U1, U2, U4, U5 and U6). Pre-mRNA splicing is essential to remove internal non-coding regions of pre-mRNA (introns) and to join the remaining segments (exons) into mRNA before translation. The PRP19-associated complex is required for stable association of U5 and U6 with the spliceosome after U4 is released. Changes within the spliceosome upon binding of the PRP19-associated complex include remodeling of the U6/5' splice site interaction and destabilization of Lsm proteins to allow further interaction of U6 with the intron sequence.

Product:

Rabbit IgG, 1mg/ml in PBS with 0.02% sodium azide, 50% glycerol, pH7.2

Molecular Weight:

~ 55 kDa

Swiss-Prot:

Q9UMS4

Purification&Purity:

The antibody was affinity-purified from rabbit antiserum by affinity-chromatography using epitope-specific immunogen and the purity is > 95% (by SDS-PAGE).

Applications:

WB: 1:500~1:1000

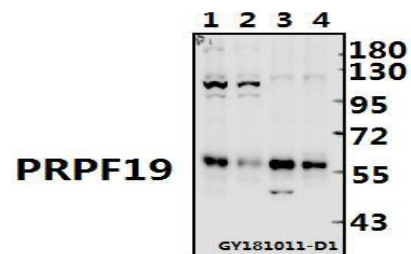
Storage&Stability:

Store at 4 °C short term. Aliquot and store at -20 °C long term. Avoid freeze-thaw cycles.

Specificity:

PRPF19 polyclonal antibody detects endogenous levels of PRPF19 protein.

DATA:



Western blot (WB) analysis of PRPF19 polyclonal antibody at 1:500 dilution

Lane1:The Brain tissue lysate of Rat(20ug)

Lane2:The Brain tissue lysate of Mouse(20ug)

Lane3:MCF-7 whole cell lysate(10ug)

Lane4:Hela whole cell lysate(10ug)

Note:

For research use only, not for use in diagnostic procedure.