

PRDM10 polyclonal antibody

Catalog: BCP01368

Host: Rabbit

Reactivity: Human,Rat

BackGround:

The PR-domain containing proteins (PRDMs) have a common involvement in the modulation of gene activities. A PR-domain family member usually produces two products, which differ by the presence or absence of the PR domain. The PR-plus product is underexpressed or disrupted, whereas the PR-minus product is present or overexpressed in cancer cells. This imbalance in the amount of the two products, which is a result of either genetic or epigenetic events, appears to be a determining cause of malignancy. PRDM10 (PR domain containing 10), also known as PFM7 or TRIS, is a 1,147 amino acid protein that contains ten C2H2-type zinc fingers and one SET domain. Existing as six alternatively spliced isoforms, PRDM10 localizes nucleus and may be involved in transcriptional regulation. PRDM10 may also play a role in the development of the central nerve system, as well as in the pathogenesis of neuronal storage disease.

Product:

Rabbit IgG, 1mg/ml in PBS with 0.02% sodium azide, 50% glycerol, pH7.2

Molecular Weight:

~ 130 kDa

Swiss-Prot:

Q9NQV6

Purification&Purity:

The antibody was affinity-purified from rabbit antiserum by affinity-chromatography using epitope-specific im-

munogen and the purity is > 95% (by SDS-PAGE).

Applications:

WB: 1:500~1:1000

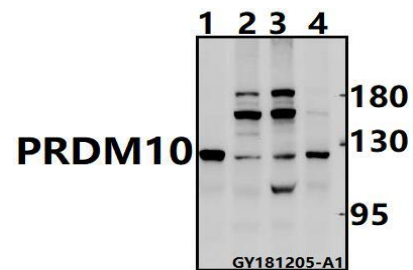
Storage&Stability:

Store at 4 °C short term. Aliquot and store at -20 °C long term. Avoid freeze-thaw cycles.

Specificity:

PRDM10 polyclonal antibody detects endogenous levels of PRDM10 protein.

DATA:



Western blot (WB) analysis of PRDM10 pAb at 1:500 dilution

Lane1:The Testis tissue lysate of Rat(40ug)

Lane2:A375 whole cell lysate(40ug)

Lane3:A2780 whole cell lysate(40ug)

Lane4:SGC7901 whole cell lysate(40ug)

Note:

For research use only, not for use in diagnostic procedure.