

PP2A- α polyclonal antibody

Catalog: BCP01355

Host: Rabbit

Reactivity: Rat,Mouse,Human

BackGround:

PP2A is the major phosphatase for microtubule-associated proteins (MAPs).PP2A can modulate the activity of phosphorylase B kinase casein kinase 2, mitogen-stimulated S6 kinase, and MAP-2 kinase.Cooperates with SGO2 to protect centromeric cohesin from separase-mediated cleavage in oocytes specifically during meiosis I (By similarity).Can dephosphorylate SV40 large T antigen and p53/TP53.Activates RAF1 by dephosphorylating it at 'Ser-259'.Mediates dephosphorylation of WEE1, preventing its ubiquitin-mediated proteolysis, increasing WEE1 protein levels, and promoting the G2/M checkpoint.Mediates dephosphorylation of MYC; promoting its ubiquitin-mediated proteolysis: interaction with AMBRA1 enhances interaction between PPP2CA and MYC.Mediates dephosphorylation of FOXO3; promoting its stabilization: interaction with AMBRA1 enhances interaction between PPP2CA and FOXO3.

Product:

Rabbit IgG, 1mg/ml in PBS with 0.02% sodium azide, 50% glycerol, pH7.2.

Molecular Weight:

~ 35 kDa

Swiss-Prot:

P67775

Purification&Purity:

The antibody was affinity-purified from rabbit antiserum by affinity-chromatography using epitope-specific im-

munogen and the purity is > 95% (by SDS-PAGE).

Applications:

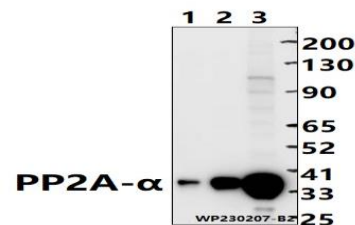
WB: 1:1000~1:2000

Storage&Stability:

Store at 4 °C short term. Aliquot and store at -20 °C long term. Avoid freeze-thaw cycles.

Specificity:

PP2A- α polyclonal antibody detects endogenous levels of PP2A- α protein.

DATA:

Western blot (WB) analysis of PP2A- α polyclonal antibody at 1:1000 dilution

Lane1:The liver tissue lysate of mouse(30ug)

Lane2:The heart tissue lysate of Rat(30ug)

Lane3:K562 whole cell lysate(30ug)

Note:

For research use only, not for use in diagnostic procedure.