

POLR2I polyclonal antibody

Catalog: BCP01353

Host: Rabbit

Reactivity: Human,Mouse,Rat

BackGround:

RNA polymerase II (Pol II) is a multi-subunit enzyme responsible for the transcription of protein-coding genes. Transcription initiation requires recruitment of the complete transcription machinery to a promoter via solicitation by activators and chromatin remodeling factors. Pol II can coordinate 10 to 14 subunits. This complex interacts with the promoter regions of genes and a variety of elements and transcription factors. POLR2I (polymerase (RNA) II (DNA directed) polypeptide I), also known as RPB9 or hRPB14.5, is a 125 amino acid nuclear protein belonging to the archaeal rpoM/eukaryotic RPA12/RPB9/RPC11 RNA polymerase family. Component of RNA polymerase II, POLR2I catalyzes the transcription of DNA into RNA using the four ribonucleoside triphosphates as substrates. POLR2I is part of the upper jaw surrounding the central large cleft and is thought to grab the incoming DNA template.

Product:

Rabbit IgG, 1mg/ml in PBS with 0.02% sodium azide, 50% glycerol, pH7.2

Molecular Weight:

~ 14 kDa

Swiss-Prot:

P36954

Purification&Purity:

The antibody was affinity-purified from rabbit antiserum by affinity-chromatography using epitope-specific immunogen and the purity is > 95% (by SDS-PAGE).

Applications:

WB: 1:500~1:1000

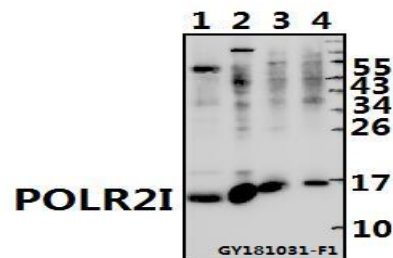
Storage&Stability:

Store at 4 °C short term. Aliquot and store at -20 °C long term. Avoid freeze-thaw cycles.

Specificity:

POLR2I polyclonal antibody detects endogenous levels of POLR2I protein.

DATA:



Western blot (WB) analysis of POLR2I pAb at 1:500 dilution

Lane1:C6 whole cell lysate(40ug)

Lane2:CT26 whole cell lysate(30ug)

Lane3:HEK293T whole cell lysate(40ug)

Lane4:L02 whole cell lysate(40ug)

Note:

For research use only, not for use in diagnostic procedure.