

## Podocin polyclonal antibody

Catalog: BCP01351

Host: Rabbit

Reactivity: Rat, Mouse

### Background:

The pathological conditions of SRN1 correlate well with mutations at the NPHS2 gene, where expression of a protein known as Podocin occurs. Abnormal or inefficient signaling through Podocin protein-dependent networks contributes to the development of podocyte dysfunction and proteinuria. The human NPHS2 gene maps to chromosome 1q25-q31 and encodes a 383 amino acid protein. Podocin is an integral membrane protein that appears to fold into a hairpin-like structure with intracellular amino- and carboxy-termini. Transmembrane and cytoplasmic portions of Podocin share homology to the corresponding regions of the stomatin family proteins. Expression of high-order oligomers of Podocin in glomerular podocytes may reflect a scaffolding function that influences proper function of the glomerular filtration barrier, which is necessary for renal stability.

### Product:

Rabbit IgG, 1mg/ml in PBS with 0.02% sodium azide, 50% glycerol, pH7.2

### Molecular Weight:

~ 42 kDa

### Swiss-Prot:

Q9NP85

### Purification&Purity:

The antibody was affinity-purified from rabbit antiserum by affinity-chromatography using epitope-specific im-

munogen and the purity is > 95% (by SDS-PAGE).

### Applications:

WB: 1:500~1:1000

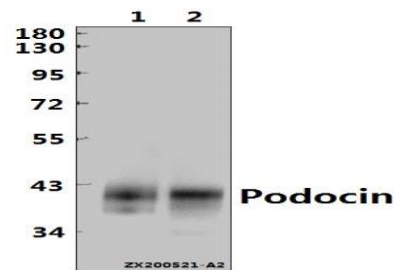
### Storage&Stability:

Store at 4 °C short term. Aliquot and store at -20 °C long term. Avoid freeze-thaw cycles.

### Specificity:

Podocin polyclonal antibody detects endogenous levels of Podocin protein.

### DATA:



Western blot (WB) analysis of Podocin pAb at 1:1000 dilution

Lane1: The Kidney tissue lysate of Mouse(20ug)

Lane2: The Kidney tissue lysate of Rat(30ug)

### Note:

For research use only, not for use in diagnostic procedure.