

PLC γ 2 (R747) polyclonal antibody

Catalog: BCP01346

Host: Rabbit

Reactivity: Human, Mouse

BackGround:

Phosphoinositide-specific phospholipase C (PLC) plays a crucial role in the initiation of receptor mediated signal transduction through the generation of the two second messengers, inositol 1,4,5-triphosphate and diacylglycerol from phosphatidylinositol 4,5-bisphosphate. There are many mammalian PLC isozymes, including PLC β 1, PLC β 2, PLC β 3, PLC β 4, PLC γ 1, PLC γ 2, PLC δ 1, PLC δ 2 and PLC ϵ . PLC δ exists as four different isoforms. PLC δ 1, a calcium signal amplifier, is activated by an atypical GTP-binding protein. In addition, PLC δ 1 is an effector for GTP-binding protein transglutaminase II-mediated oxytocin receptor and α 1B-adrenoreceptor signaling. Mouse PLC δ 1 is highly expressed in brain, heart, lung and testis.

Product:

Rabbit IgG, 1mg/ml in PBS with 0.02% sodium azide, 50% glycerol, pH7.2

Molecular Weight:

~ 148 kDa

Swiss-Prot:

P16885

Purification&Purity:

The antibody was affinity-purified from rabbit antiserum by affinity-chromatography using epitope-specific immunogen and the purity is > 95% (by SDS-PAGE).

Applications:

WB: 1:500~1:1000

IHC: 1:50~1:200

Storage&Stability:

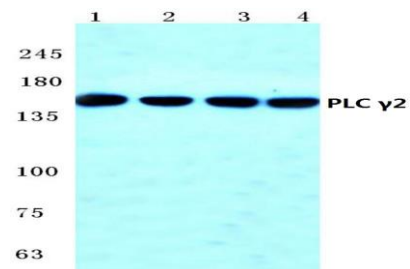
Store at 4 °C short term. Aliquot and store at -20 °C long

term. Avoid freeze-thaw cycles.

Specificity:

PLC γ 2 (R747) polyclonal antibody detects endogenous levels of PLC γ 2 protein.

DATA:

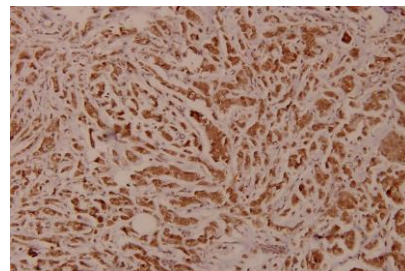


Western blot (WB) analysis of PLC γ 2 (R747) pAb at 1:500 dilution

Lane1:PC3 whole cell lysate(40ug)

Lane2:BV2 whole cell lysate(40ug)

Lane3:Hela whole cell lysate(40ug)



Immunohistochemistry (IHC) analyzes of PLC γ 2 (R747) pAb in paraffin-embedded human breast carcinoma tissue at 1:100.

Note:

For research use only, not for use in diagnostic procedure.