

## PLC $\gamma$ 1 (G765) polyclonal antibody

Catalog: BCP01342

Host: Rabbit

Reactivity: Human, Mouse, Rat

### BackGround:

Phosphoinositide-specific phospholipase C (PLC) plays a crucial role in the initiation of receptor mediated signal transduction through the generation of the two second messengers, inositol 1,4,5-triphosphate and diacylglycerol from phosphatidylinositol 4,5-bisphosphate. There are many mammalian PLC isozymes, including PLC  $\beta$ 1, PLC  $\beta$ 2, PLC  $\beta$ 3, PLC  $\beta$ 4, PLC  $\gamma$ 1, PLC  $\gamma$ 2, PLC  $\delta$ 1, PLC  $\delta$ 2 and PLC  $\epsilon$ . PLC  $\gamma$ 1 is widely distributed in bronchiolar epithelium, type I and II pneumocytes and fibroblasts of the interstitial tissue. Actinregulatory protein Villin is tyrosine phosphorylated and associates with PLC  $\gamma$ 1 in the brush border of intestinal epithelial cells. Villin regulates PLC  $\gamma$ 1 activity by modifying its own ability to bind phosphatidylinositol 4,5-bisphosphate. PLC  $\gamma$ 1 binds  $\alpha$ 1 $\beta$ 1 Integrin and modulates  $\alpha$ 1 $\beta$ 1 Integrin-specific adhesion. PLC  $\gamma$ 1 and Ca<sup>2+</sup> play a direct role in VEGF-regulated endothelial growth, however this signaling pathway is not linked to FGF-mediated effects in primary endothelial cells.

### Product:

Rabbit IgG, 1mg/ml in PBS with 0.02% sodium azide, 50% glycerol, pH7.2

### Molecular Weight:

~ 155 kDa

### Swiss-Prot:

P19174

### Purification&Purity:

The antibody was affinity-purified from rabbit antiserum by affinity-chromatography using epitope-specific immunogen and the purity is > 95% (by SDS-PAGE).

### Applications:

WB: 1:500~1:1000

IHC: 1:50~1:200

### Storage&Stability:

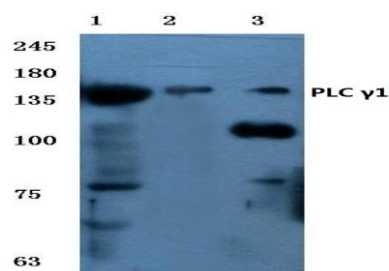
Store at 4 °C short term. Aliquot and store at -20 °C long

term. Avoid freeze-thaw cycles.

### Specificity:

PLC  $\gamma$ 1 (G765) polyclonal antibody detects endogenous levels of PLC  $\gamma$ 1 protein.

### DATA:



Western blot (WB) analysis of PLC  $\gamma$ 1 (G765) polyclonal antibody at 1:500 dilution

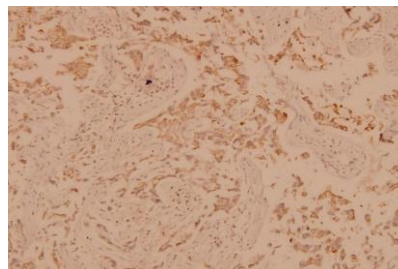
Lane1:K562 whole cell lysate(40ug)

Lane2:Hela whole cell lysate(40ug)

Lane3:HEK293T whole cell lysate(40ug)

Lane4:MEF whole cell lysate(40ug)

Lane5:C6 whole cell lysate(40ug)



Immunohistochemistry (IHC) analyzes of PLC  $\gamma$ 1 (G765) pAb in paraffin-embedded human breast carcinoma tissue at 1:100.

### Note:

For research use only, not for use in diagnostic procedure.