

PKC θ (phospho-T538) polyclonal antibody

Catalog: BCP01336

Host: Rabbit

Reactivity: Human, Mouse, Rat

BackGround:

Members of the protein kinase C (PKC) family of serine/threonine kinases play a key role in regulating the differentiation and growth of diverse cell types. PKC theta is a member of the PKC family, and its predominant expression in hematopoietic cells suggests that it may play a role in signal transduction and growth regulatory pathways unique to these cells. PKC theta is a Ca(2+)-independent PKC isoform that is selectively expressed in T lymphocytes (and muscle), and it is thought to play an important role in T cell receptor-induced activation. Among several PKC isoenzymes expressed in T cells, PKC theta is unique in being rapidly recruited to the site of TCR clustering. It has been shown that PKC theta is essential for TCR-mediated T-cell activation, but it is dispensable during TCR-dependent thymocyte development.

Product:

Rabbit IgG, 1mg/ml in PBS with 0.02% sodium azide, 50% glycerol, pH7.2

Molecular Weight:

~ 80 kDa

Swiss-Prot:

Q04759

Purification&Purity:

The antibody was affinity-purified from rabbit antiserum by affinity-chromatography using epitope-specific immunogen and the purity is > 95% (by SDS-PAGE).

Applications:

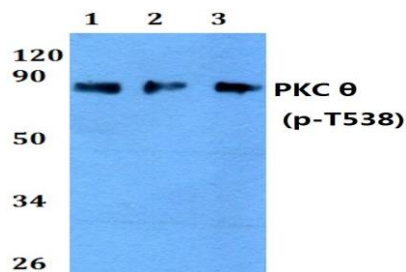
WB:1:500~1:1000

Storage&Stability:

Store at 4 °C short term. Aliquot and store at -20 °C long term. Avoid freeze-thaw cycles.

Specificity:

PKC θ (phospho-T538) polyclonal antibody detects endogenous levels of PKC θ protein only when phosphorylated at Thr538.

DATA:

Western blot (WB) analysis of PKC θ (phospho-T538) polyclonal antibody at 1:500 dilution

Lane1:MCF-7 whole cell lysate

Lane2:MCF-7 treated with LPS(100ng/ml) for 5 minutes whole cell lysate

Lane3:MCF-7 treated with LPS(100ng/ml) for 30 minutes whole cell lysate

Note:

For research use only, not for use in diagnostic procedure.