

PKC α (G633) polyclonal antibody

Catalog: BCP01323

Host: Rabbit

Reactivity: Human, Mouse, Rat

BackGround:

Members of the protein kinase C (PKC) family play a key regulatory role in a variety of cellular functions including cell growth and differentiation, gene expression, hormone secretion and membrane function. PKCs were originally identified as serine/threonine protein kinases whose activity was dependent on calcium and phospholipids. Diacylglycerols (DAG) and tumor promoting phorbol esters bind to and activate PKC. PKCs can be subdivided into at least two major classes including conventional (c) PKC isoforms (α , β I, β II and γ) and novel (n) PKC isoforms (δ , ϵ , ζ , η and θ). Patterns of expression for each PKC isoform differ among tissues and PKC family members exhibit clear differences in their cofactor dependencies. For instance, the kinase activities of nPKC δ and ϵ are independent of Ca^{2+} .

Product:

Rabbit IgG, 1mg/ml in PBS with 0.02% sodium azide, 50% glycerol, pH7.2

Molecular Weight:

~ 80 kDa

Swiss-Prot:

P17252

Purification&Purity:

The antibody was affinity-purified from rabbit antiserum by affinity-chromatography using epitope-specific immunogen and the purity is > 100% (by SDS-PAGE).

Applications:

WB: 1:500~1:1000

IHC: 1:50~1:200

IP: 1:10~1:100

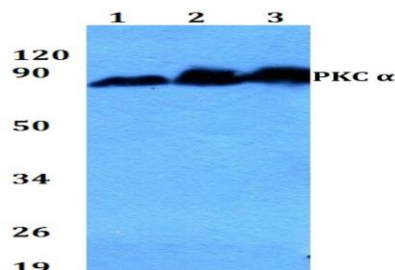
Storage&Stability:

Store at 4 °C short term. Aliquot and store at -20 °C long term. Avoid freeze-thaw cycles.

Specificity:

PKC α (G633) polyclonal antibody detects endogenous levels of PKC α protein.

DATA:



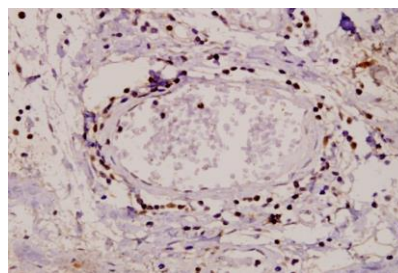
Western blot (WB) analysis of PKC α (G633) polyclonal antibody at 1:500 dilution

Lane1: PC12 whole cell lysate (40ug)

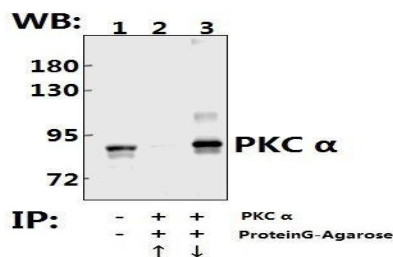
Lane2: CT26 whole cell lysate (40ug)

Lane3: HEK293T whole cell lysate (40ug)

Lane4: L02 whole cell lysate (40ug)



Immunohistochemistry (IHC) analysis of PKC α (G633) pAb in paraffin-embedded human tonsil carcinoma tissue at 1:50.



Immunoprecipitation of A549 cell lysate using PKC α (G633) pAb (Sepharose Bead Conjugate) #BD0048 (lane 2 and lane 3). Lane 1 is 20% input. The western blot was probed using PKC α (G633) pAb. “ \uparrow ” (supernatant); “ \downarrow ” (deposition)

Note:

For research use only, not for use in diagnostic procedure.