

## Pitx1 (E130) polyclonal antibody

Catalog: BCP01316

Host: Rabbit

Reactivity: Human, Mouse, Rat

### BackGround:

Pitx1 and Pitx2 are highly homologous, bicoid-related transcription factors. Pitx1 is a bicoid-related homeodomain factor that exhibits preferential expression in the hindlimb, as well as expression in the developing anterior pituitary gland and first branchial arch. Deletion of the Pitx1 locus results in decreased distal expression of the hindlimb-specific marker, the T-box factor (Tbx4). Pitx1 may modulate morphogenesis, growth and patterning of a specific hindlimb region, and serves as a component of the variables that influence morphological and growth distinctions in forelimb and hindlimb identity.

### Product:

Rabbit IgG, 1mg/ml in PBS with 0.02% sodium azide, 50% glycerol, pH7.2

### Molecular Weight:

~ 34 kDa

### Swiss-Prot:

P78337

### Purification&Purity:

The antibody was affinity-purified from rabbit antiserum by affinity-chromatography using epitope-specific immunogen and the purity is > 95% (by SDS-PAGE).

### Applications:

WB: 1:500~1:1000

IHC: 1:50~1:200

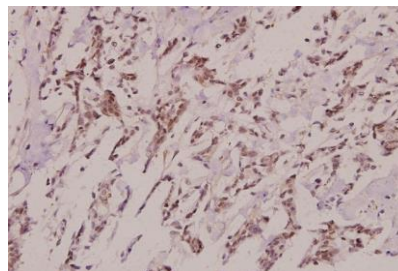
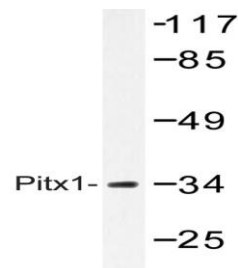
### Storage&Stability:

Store at 4 °C short term. Aliquot and store at -20 °C long term. Avoid freeze-thaw cycles.

### Specificity:

Pitx1 (E130) polyclonal antibody detects endogenous levels of Pitx1 protein.

### DATA:



Immunohistochemistry (IHC) analyzes of Pitx1 (E130) pAb in paraffin-embedded human breast carcinoma tissue at 1:100.

### Note:

For research use only, not for use in diagnostic procedure.