

PDGF-B (L48) polyclonal antibody

Catalog: BCP01280

Host: Rabbit

Reactivity: Human, Mouse, Rat

Background:

PDGF is a mitogen for mesenchyme- and glia-derived cells. It consists of two disulfide-bonded polypeptide chains, A and B, and occurs as three isoforms, PDGF AA, PDGF AB and PDGF BB. The three isoforms bind with different affinities to two receptor types, α and β , which are structurally related and endowed with protein-tyrosine kinase domains. Ligand binding induces activation of the receptor kinases by formation of receptor dimers; the A subunit of PDGF binds only to α receptors with high affinity, whereas the B subunit can bind to both α and β receptors. Evidence suggests that PDGF may function as a neurotrophic factor.

Product:

Rabbit IgG, 1mg/ml in PBS with 0.02% sodium azide, 50% glycerol, pH7.2

Molecular Weight:

~ 27 kDa

Swiss-Prot:

P01127

Purification&Purity:

The antibody was affinity-purified from rabbit antiserum by affinity-chromatography using epitope-specific immunogen and the purity is > 95% (by SDS-PAGE).

Applications:

WB: 1:500~1:1000

IHC: 1:50~1:200

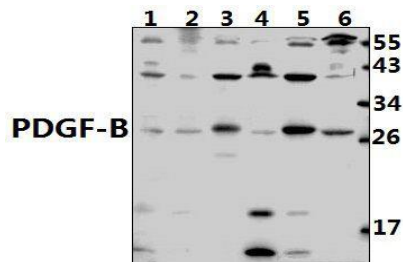
Storage&Stability:

Store at 4 °C short term. Aliquot and store at -20 °C long term. Avoid freeze-thaw cycles.

Specificity:

PDGFB (L48) polyclonal antibody detects endogenous

levels of PDGFB protein.

DATA:

Western blot (WB) analysis of PDGF-B (L48) pAb at 1:500 dilution

Lane1:HepG2 whole cell lysate(40ug)

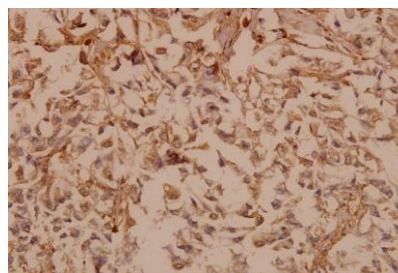
Lane2:3T3-L1 whole cell lysate(40ug)

Lane3:H9C2 whole cell lysate(40ug)

Lane4:H1792 whole cell lysate(40ug)

Lane5:Hela whole cell lysate(40ug)

Lane6:HEK293T whole cell lysate(40ug)



Immunohistochemistry (IHC) analyzes of PDGF-B (L48) pAb in paraffin-embedded human breast carcinoma tissue at 1:50.

Note:

For research use only, not for use in diagnostic procedure.