

PDGF-A (K154) polyclonal antibody

Catalog: BCP01279

Host: Rabbit

Reactivity: Human, Mouse, Rat

BackGround:

PDGF is a mitogen for mesenchyme- and glia-derived cells. It consists of two disulfide-bonded polypeptide chains, A and B, and occurs as three isoforms, PDGF-AA, PDGF-AB and PDGF-BB. The three isoforms bind with different affinities to two receptor types, α and β , which are structurally related and endowed with protein-tyrosine kinase domains. Ligand binding induces activation of the receptor kinases by formation of receptor dimers; the A subunit of PDGF binds only to α receptors with high affinity, whereas the B subunit can bind to both α and β receptors. Evidence suggests that PDGF may function as a neurotrophic factor. The fact that receptors for PDGF-A are expressed in oligodendrocyte progenitor cells whereas receptors for PDGF-B are expressed on neurons suggests that the different isoforms of PDGF may regulate growth and differentiation of different cell types in the developing central nervous system by paracrine and autocrine routes.

Product:

Rabbit IgG, 1mg/ml in PBS with 0.02% sodium azide, 50% glycerol, pH7.2

Molecular Weight:

~ 24 kDa

Swiss-Prot:

P04085

Purification&Purity:

The antibody was affinity-purified from rabbit antiserum by affinity-chromatography using epitope-specific immunogen and the purity is > 95% (by SDS-PAGE).

Applications:

WB: 1:500~1:1000

IHC: 1:50~1:200

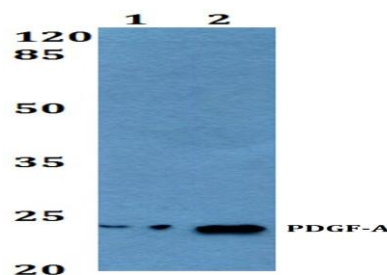
Storage&Stability:

Store at 4 °C short term. Aliquot and store at -20 °C long term. Avoid freeze-thaw cycles.

Specificity:

PDGF-A (K154) polyclonal antibody detects endogenous levels of PDGF-A protein.

DATA:



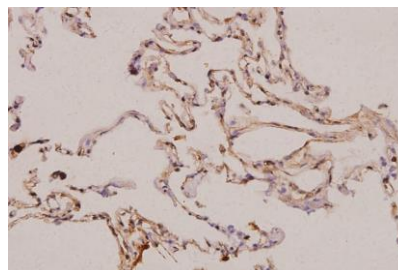
Western blot (WB) analysis of PDGF-A (K154) pAb at 1:500 dilution

Lane1:MCF-7 whole cell lysate(40ug)

Lane2:Hela whole cell lysate(40ug)

Lane3:The Lung tissue lysate of Mouse(40ug)

Lane4:PMVEC whole cell lysate(40ug)



Immunohistochemistry (IHC) analyzes of PDGF-A (K154) pAb in paraffin-embedded human lung carcinoma tissue at 1:100.

Note:

For research use only, not for use in diagnostic procedure.