

## PD2R (E301) polyclonal antibody

Catalog: BCP01276

Host: Rabbit

Reactivity: Human,Mouse,Rat

### BackGround:

The prostaglandin D2 receptor is a member of the G-protein-coupled receptor (GPCR) family (subfamily: prostanoid). It has been shown to function as a prostanoid DP receptor. Its activity is mainly mediated by G-S proteins that stimulate adenylate cyclase resulting in an elevation of intracellular cAMP and Ca<sup>2+</sup>. Knockout studies in mice suggest that the ligand of this receptor, prostaglandin D2 (PGD2), functions as a mast cell-derived mediator to trigger asthmatic responses. Prostaglandin D2 receptor has been reported to be expressed in human small intestine, colon (goblet cells), eye, and eosinophils. ESTs have been isolated from human brain libraries.

### Product:

Rabbit IgG, 1mg/ml in PBS with 0.02% sodium azide, 50% glycerol, pH7.2

### Molecular Weight:

~ 40 kDa

### Swiss-Prot:

Q13258

### Purification&Purity:

The antibody was affinity-purified from rabbit antiserum by affinity-chromatography using epitope-specific immunogen and the purity is > 95% (by SDS-PAGE).

### Applications:

WB: 1:500~1:1000

IF: 1:50~1:200

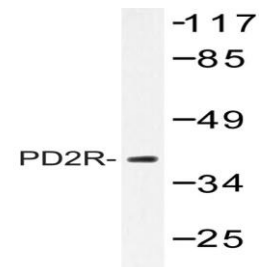
### Storage&Stability:

Store at 4 °C short term. Aliquot and store at -20 °C long term. Avoid freeze-thaw cycles.

### Specificity:

PD2R (E301) polyclonal antibody detects endogenous levels of PD2R protein.

### DATA:



Western blot (WB) analysis of PD2R (E301) pAb at 1:1000 dilution

Lane1: The Eye tissue lysate of Mouse(40ug)

Lane2: The Eye tissue lysate of Rat(40ug)

Lane3: HCT116 whole cell lysate(40ug)

Lane4: HEK293T whole cell lysate(40ug)

### Note:

For research use only, not for use in diagnostic procedure.