

P-Cadherin (G78) polyclonal antibody

Catalog: BCP01274

Host: Rabbit

Reactivity: Human,Mouse,Rat

BackGround:

The cadherins are a family of Ca⁺⁺-dependent adhesion molecules that function to mediate cell-cell binding critical to the maintenance of tissue structure and morphogenesis. Cadherins each contain a large extracellular domain at the amino terminus, which is characterized by a series of five homologous repeats, the most distal of which is thought to be responsible for binding specificity. The relatively short carboxy terminal, intracellular domain interacts with a variety of cytoplasmic proteins, including β -catenin, to regulate cadherin function. R-cadherin (for retinal-cadherin, also designated cadherin-4), which was first identified in the retina of chicken, has been shown to be involved in the development of striated muscle and potentially epithelia in addition to its involvement in retinal development.

Product:

Rabbit IgG, 1mg/ml in PBS with 0.02% sodium azide, 50% glycerol, pH7.2

Molecular Weight:

~ 110 kDa

Swiss-Prot:

P22223

Purification&Purity:

The antibody was affinity-purified from rabbit antiserum by affinity-chromatography using epitope-specific immunogen and the purity is > 95% (by SDS-PAGE).

Applications:

WB: 1:500~1:1000

IHC: 1:50~1:200

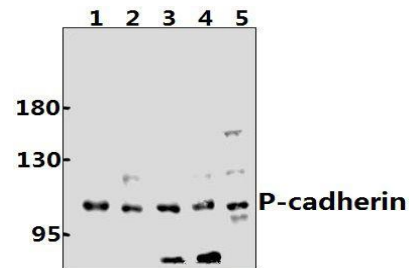
Storage&Stability:

Store at 4 °C short term. Aliquot and store at -20 °C long term. Avoid freeze-thaw cycles.

Specificity:

P-Cadherin (G78) polyclonal antibody detects endogenous levels of P-Cadherin protein.

DATA:



Western blot (WB) analysis of P-cadherin (G78) pAb Antibody at 1:500 dilution

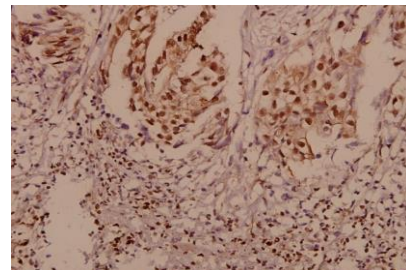
Lane1:A375 whole cell lysate(40ug)

Lane2:C6 whole cell lysate(40ug)

Lane3:Beas-2B whole cell lysate(40ug)

Lane4:EC9706 whole cell lysate(40ug)

Lane5:CT26 whole cell lysate(40ug)



Immunohistochemistry (IHC) analyzes of P-cadherin (G78) pAb in paraffin-embedded human breast carcinoma tissue at 1:50.

Note:

For research use only, not for use in diagnostic procedure.