

## PBK (I4) polyclonal antibody

Catalog: BCP01273

Host: Rabbit

Reactivity: Human,Mouse,Rat

### BackGround:

PBK (PDZ binding kinase) belongs to the serine/threonine protein kinase family. It is related to the dual specific mitogen-activated protein kinase kinase (MAPKK) family and phosphorylates MAP kinase p38. It is active only in mitosis. When phosphorylated it forms a complex with TP53, leading to TP53 destabilization and attenuation of G2/M checkpoint during doxorubicin-induced DNA damage. It makes a kinase-substrate complex with cdk1/cyclin B1 and PRC1 on microtubules during mitosis, enhances the cdk1/cyclin B1-dependent phosphorylation of PRC1 and thereby strongly promotes cytokinesis. It may play a role in the activation of lymphoid cells.

### Product:

Rabbit IgG, 1mg/ml in PBS with 0.02% sodium azide, 50% glycerol, pH7.2

### Molecular Weight:

~ 36 kDa

### Swiss-Prot:

Q96KB5

### Purification&Purity:

The antibody was affinity-purified from rabbit antiserum by affinity-chromatography using epitope-specific immunogen and the purity is > 95% (by SDS-PAGE).

### Applications:

WB: 1:500~1:1000

IHC: 1:50~1:200

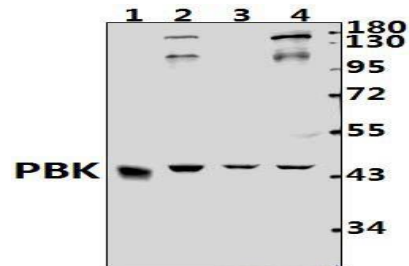
### Storage&Stability:

Store at 4 °C short term. Aliquot and store at -20 °C long term. Avoid freeze-thaw cycles.

### Specificity:

PBK/TOPK (I4) polyclonal antibody detects endogenous levels of PBK/TOPK protein

### DATA:



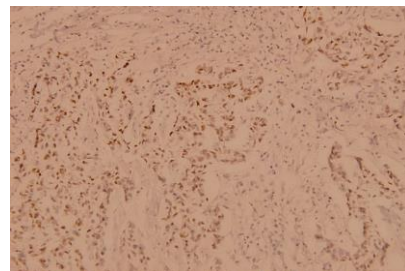
Western blot (WB) analysis of PBK (I4) pAb at 1:500 dilution

Lane1:PMVEC whole cell lysate(40ug)

Lane2:K562 whole cell lysate(40ug)

Lane3:3T3-L1 whole cell lysate(40ug)

Lane4:HuT78 whole cell lysate(40ug)



Immunohistochemistry (IHC) analyzes of PBK (I4) pAb in paraffin-embedded human breast carcinoma tissue at 1:100.

### Note:

For research use only, not for use in diagnostic procedure.