

Parkin (phospho-S131) polyclonal antibody

Catalog: BCP01267

Host: Rabbit

Reactivity: Human

BackGround:

Parkin is a zinc-finger protein that is related to ubiquitin at the amino terminus. The wild type Parkin gene, which maps to human chromosome 6q25.2- 27, encodes a 465 amino acid full-length protein that is expressed as multiple isoforms ranging from 50-58 kDa. Mutations in the Parkin gene are responsible for utosomal recessive juvenile Parkinson's disease and commonly involve deletions of exons 3-5. In humans, Parkin is expressed in a subset of cells of the basal ganglia, midbrain, cerebellum and cerebral cortex, and is subject to alternative splicing in different tissues. Parkin expression is also high in the brainstem of mice, with the majority of immunopositive cells being neurons. The Parkin gene has been identified in a diverse group of organisms including mammals, birds, frog and fruit flies, suggesting that analogous functional roles of the Parkin protein may have been highly conserved during the course of evolution

Product:

Rabbit IgG, 1mg/ml in PBS with 0.02% sodium azide, 50% glycerol, pH7.2

Molecular Weight:

~ 52 kDa

Swiss-Prot:

O60260

Purification&Purity:

The antibody was affinity-purified from rabbit antiserum by affinity-chromatography using epitope-specific immunogen and the purity is > 95% (by SDS-PAGE).

Applications:

WB: 1:500~1:1000

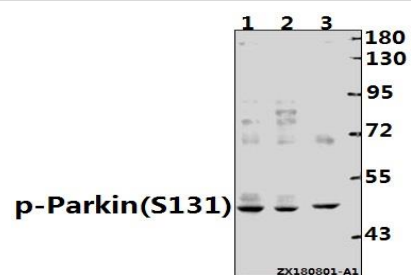
Storage&Stability:

Store at 4 °C short term. Aliquot and store at -20 °C long term. Avoid freeze-thaw cycles.

Specificity:

Parkin (phospho-S131) polyclonal antibody detects endogenous levels of Parkin protein only when phosphorylated at Ser131.

DATA:

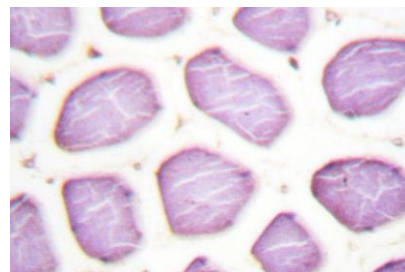


Western blot (WB) analysis of p-Parkin (S131) pAb at 1:500 dilution

Lane1:MCF-7 whole cell lysate(40ug)

Lane2:HCT116 whole cell lysate(40ug)

Lane3:SGC7901 whole cell lysate(40ug)



Note:

For research use only, not for use in diagnostic procedure.