

## Op18 (A18) polyclonal antibody

Catalog: BCP01228

Host: Rabbit

Reactivity: Human,Mouse,Rat

### BackGround:

Op18 (for oncoprotein 18, also designated stathmin, prosolin or metablastin) is a conserved, tubulin-associated, intracellular phosphoprotein. Many different phosphorylated forms of Op18 are observed, and it is expressed as two different isoforms. Op18 is considered a critical regulator of microtubulin dynamics and is downregulated by p53. It serves as a transducing protein, via phosphorylation, for a variety of cell signaling pathways and is involved in both mitosis and differentiation. Op18 is present in many cancers, including breast carcinomas, and is highly expressed in acute leukemias of different subtypes.

### Product:

Rabbit IgG, 1mg/ml in PBS with 0.02% sodium azide, 50% glycerol, pH7.2

### Molecular Weight:

~ 19 kDa

### Swiss-Prot:

P16949

### Purification&Purity:

The antibody was affinity-purified from rabbit antiserum by affinity-chromatography using epitope-specific immunogen and the purity is > 95% (by SDS-PAGE).

### Applications:

WB: 1:500~1:1000

IHC: 1:50~1:200

IF: 1:50~1:200

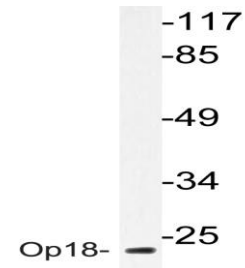
### Storage&Stability:

Store at 4 °C short term. Aliquot and store at -20 °C long term. Avoid freeze-thaw cycles.

### Specificity:

Op18 (A18) polyclonal antibody detects endogenous levels of Op18 protein.

### DATA:



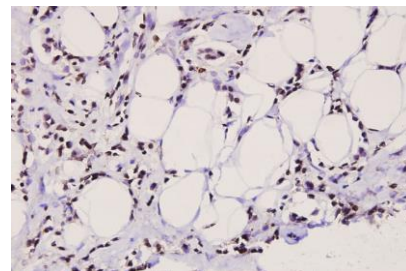
Western blot (WB) analysis of Op18 (A18) pAb at 1:500 dilution

Lane1:Hela whole cell lysate(40ug)

Lane2:K562 whole cell lysate(10ug)

Lane3:The Brain tissue lysate of Rat(10ug)

Lane4:The Brain tissue lysate of Mouse(40ug)



Immunohistochemistry (IHC) analyzes of Op18 (A18) pAb in paraffin-embedded human breast carcinoma tissue at 1:100.

### Note:

For research use only, not for use in diagnostic procedure.