

Oct-1 (L68) polyclonal antibody

Catalog: BCP01227

Host: Rabbit

Reactivity: Human,Mouse,Rat

BackGround:

Organic cation transporters (OCT) are expressed in the plasma membrane of epithelial cells from a wide range of tissues, where they function in the elimination of endogenous amines, cationic drugs and other xenobiotics. In humans, OCT1 is primarily expressed in the liver while OCT2 is expressed in the kidney. OCT3 is expressed in the placenta, skeletal muscle, prostate, aorta and liver. OCT3, also known as extraneuronal monoamine transporter, is widely expressed in different regions of the brain including the hippocampus, cerebellum and cerebral cortex. OCT3 mediates the uptake of several neuroactive agents, including dopamine, and may play an important role in the disposition of neurotransmitters and cationic neurotoxins in the brain.

Product:

Rabbit IgG, 1mg/ml in PBS with 0.02% sodium azide, 50% glycerol, pH7.2

Molecular Weight:

~ 89 kDa

Swiss-Prot:

P14859

Purification&Purity:

The antibody was affinity-purified from rabbit antiserum by affinity-chromatography using epitope-specific immunogen and the purity is > 95% (by SDS-PAGE).

Applications:

WB: 1:500~1:1000

IHC: 1:50~1:200

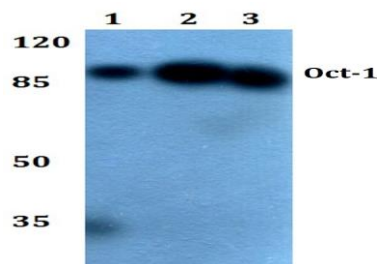
Storage&Stability:

Store at 4 °C short term. Aliquot and store at -20 °C long term. Avoid freeze-thaw cycles.

Specificity:

OCT (L68) polyclonal antibody detects endogenous levels of OCT1 protein.

DATA:



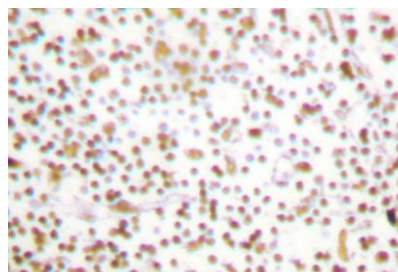
Western blot (WB) analysis of Oct-1 (L68) polyclonal antibody at 1:500 dilution

Lane1:HEK293T whole cell lysate(40ug)

Lane2:HepG2 whole cell lysate(40ug)

Lane3:PC12 whole cell lysate(40ug)

Lane4:NIH-3T3 whole cell lysate(40ug)



Immunohistochemistry (IHC) analyzes of OCT1 (L68) pAb in paraffin-embedded human lymph node tissue.

Note:

For research use only, not for use in diagnostic procedure.