

## Nup160 (L424) polyclonal antibody

Catalog: BCP01224

Host: Rabbit

Reactivity: Human,Mouse,Rat

### BackGround:

Nuclear pore complexes (NPCs) are the channels for the bi-directional movement of macromolecules between the nucleus and cytoplasm, and contain more than 100 different subunits. Many of them belong to a family called nucleoporins, which are characterized by the presence of O-linked N-acetylglucosamine moieties and a distinctive pentapeptide repeat (XFXFG). Nuclear pore complex protein Nup96 (Nup96) is formed by cleavage of a 186 kDa precursor protein. This proteolytic cleavage yields two nucleoporins, Nup98 and Nup96. Nup96 is part of the Nup160 subcomplex in the nuclear pore (which consists of Nup160, Nup133, Nup107 and Nup96). Nup96 plays a major role in the two-way transport across the nuclear pore and is important in RNA export.

### Product:

Rabbit IgG, 1mg/ml in PBS with 0.02% sodium azide, 50% glycerol, pH7.2

### Molecular Weight:

~150 kDa

### Swiss-Prot:

Q12769

### Purification&Purity:

The antibody was affinity-purified from rabbit antiserum by affinity-chromatography using epitope-specific immunogen and the purity is > 95% (by SDS-PAGE).

### Applications:

WB: 1:500~1:1000

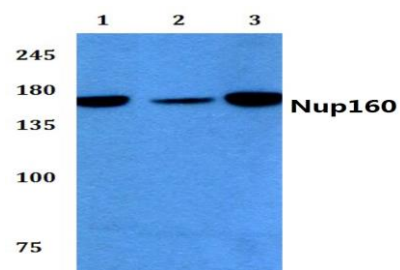
### Storage&Stability:

Store at 4 °C short term. Aliquot and store at -20 °C long term. Avoid freeze-thaw cycles.

### Specificity:

Nup160 (L424) polyclonal antibody detects endogenous levels of Nup160 protein.

### DATA:



Western blot (WB) analysis of Nup160 (L424) pAb at 1:2000 dilution

Lane1:Hela whole cell lysate(20ug)

Lane2:K562 whole cell lysate(20ug)

Lane3:The Testis tissue lysate of Mouse(40ug)

Lane4:The Uterus tissue lysate of Rat(40ug)

### Note:

For research use only, not for use in diagnostic procedure.