

Nrf3 (D530) polyclonal antibody

Catalog: BCP01220

Host: Rabbit

Reactivity: Human,Mouse,Rat

BackGround:

Nrf3 (nuclear factor (erythroid-derived 2)-like 3, NFE2L3, NF-E2-related factor 3, NRF3) is a transcription factor that influences placental gene expression and development. Nrf3 contains a Cap'n'collar (CNC)-type basic leucine zipper (bZIP) domain, and belongs to the CNC gene family. CNC genes play important roles in development, differentiation, oncogenesis, and stress signaling. Nrf3 protein is detectable in primary placental cytotrophoblasts. The human choriocarcinoma cell lines BeWo and JAR from trophoblastic tumors of the placenta express Nrf3 transcripts. Nrf3/MAFG heterodimers recognize nuclear factor-erythroid 2/Maf recognition element-type DNA-binding motifs. Keratinocyte growth factor (KGF)-regulates Nrf3-dependent gene expression during cutaneous wound repair.

Product:

Rabbit IgG, 1mg/ml in PBS with 0.02% sodium azide, 50% glycerol, pH7.2

Molecular Weight:

~ 76 kDa

Swiss-Prot:

Q9Y4A8

Purification&Purity:

The antibody was affinity-purified from rabbit antiserum by affinity-chromatography using epitope-specific immunogen and the purity is > 95% (by SDS-PAGE).

Applications:

WB: 1:500~1:1000

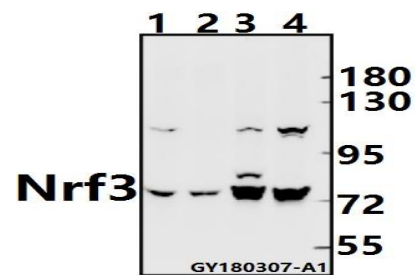
Storage&Stability:

Store at 4 °C short term. Aliquot and store at -20 °C long term. Avoid freeze-thaw cycles.

Specificity:

Nrf3 (D530) polyclonal antibody detects endogenous levels of Nrf3 protein.

DATA:



Western blot (WB) analysis of Nrf3 (D530) pAb at 1:500 dilution

Lane1:CT26 whole cell lysate(40ug)

Lane2:The Uterus tissue lysate of Rat(40ug)

Lane3:A375 whole cell lysate(40ug)

Lane4:PC3 whole cell lysate(40ug)

Note:

For research use only, not for use in diagnostic procedure.