

NR6A1 polyclonal antibody

Catalog: BCP01216

Host: Rabbit

Reactivity: Human

BackGround:

GCNF (Germ Cell Nuclear Factor), also known as NR6A1 (Nuclear Receptor Subfamily 6 Group A member), is an orphan member of the nuclear receptor gene superfamily. It has been shown to be expressed in the nervous system during development and during specific stages in maturing germ cells of the ovary and testis in the adult, and has probable roles in gametogenesis, neurogenesis, and normal embryonic development during gastrulation. Inactivation of GCNF in mouse results in abnormal posterior development, impaired midbrain development, insufficient closure of the neural tube, and eventual embryonic death. GCNF has been shown to be a repressor of OCT-4 and of the protamine genes and plays a critical role in the control of gene expression during embryogenesis and spermatogenesis.

Product:

Rabbit IgG, 1mg/ml in PBS with 0.02% sodium azide, 50% glycerol, pH7.2.

Molecular Weight:

~ 50 kDa

Swiss-Prot:

Q15406

Purification&Purity:

The antibody was affinity-purified from rabbit antiserum by affinity-chromatography using epitope-specific immunogen and the purity is > 95% (by SDS-PAGE).

Applications:

WB: 1:2000~1:5000

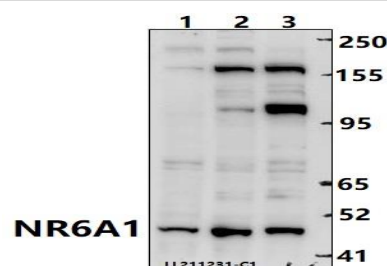
Storage&Stability:

Store at 4 °C short term. Aliquot and store at -20 °C long term. Avoid freeze-thaw cycles.

Specificity:

NR6A1 polyclonal antibody detects endogenous levels of NR6A1 protein.

DATA:



Western blot (WB) analysis of NR6A1 polyclonal antibody at 1:2000 dilution

Lane1:Hela whole cell lysate(40ug)

Lane2:HepG2 whole cell lysate(40ug)

Lane3:K562 whole cell lysate(40ug)

Note:

For research use only, not for use in diagnostic procedure.