

NFKB-p65 polyclonal antibody

Catalog: BCP01190

Host: Rabbit

Reactivity: Human, Mouse, Rat

BackGround:

Transcription factors of the nuclear factor κ B (NF- κ B)/Rel family play a pivotal role in inflammatory and immune responses. There are five family members in mammals: RelA, c-Rel, RelB, NF- κ B1 (p105/p50), and NF- κ B2 (p100/p52). Both p105 and p100 are proteolytically processed by the proteasome to produce p50 and p52, respectively. Rel proteins bind p50 and p52 to form dimeric complexes that bind DNA and regulate transcription. In unstimulated cells, NF- κ B is sequestered in the cytoplasm by I κ B inhibitory proteins. NF- κ B-activating agents can induce the phosphorylation of I κ B proteins, targeting them for rapid degradation through the ubiquitin-proteasome pathway and releasing NF- κ B to enter the nucleus where it regulates gene expression. NIK and IKK α (IKK1) regulate the phosphorylation and processing of NF- κ B2 (p100) to produce p52, which translocates to the nucleus.

Product:

Rabbit IgG, 1mg/ml in PBS with 0.02% sodium azide, 50% glycerol, pH7.2

Molecular Weight:

~ 65 kDa

Swiss-Prot:

Q04206

Purification&Purity:

The antibody was affinity-purified from rabbit antiserum by affinity-chromatography using epitope-specific immunogen and the purity is > 95% (by SDS-PAGE).

Applications:

WB: 1:500~1:1000

IHC: 1:50~1:200

IP: 1:50~1:200

IF: 1:50~1:200

Storage&Stability:

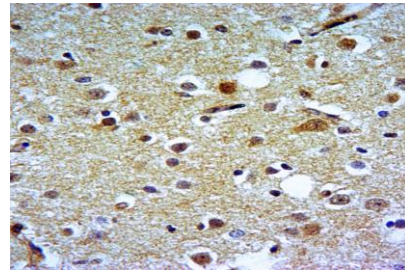
Store at 4 °C short term. Aliquot and store at -20 °C long term. Avoid freeze-thaw cycles.

Specificity:

NFKB-p65 polyclonal antibody detects endogenous lev-

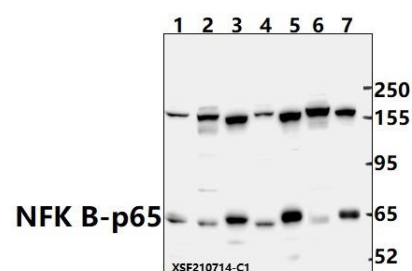
els of NFKB-p65 protein.

DATA:



Immunohistochemistry of paraffin-embedded Rat Brain using NFKB-p65 antibody at dilution of 1:50.

Immunoprecipitation of A549 cell lysates using NFKB-p65 pAb (Sepharose Bead Conjugate)#BD0048 (lane 3 and lane 4) and Nonspecific IgG Control (Sepharose Bead Conjugate)#BD0048 (lane 1 and lane 2). Lane 5 is 30% input. The western blot was probed using NFKB-p65 pAb.



Western blot (WB) analysis of NFK B-p65 polyclonal antibody at 1:500 dilution

Lane1:C6 whole cell lysate(40ug)

Lane2:BV2 whole cell lysate(40ug)

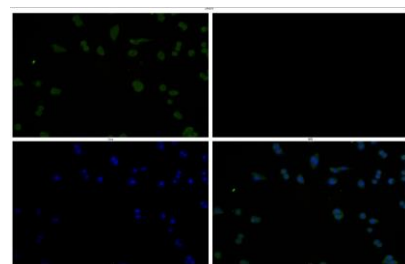
Lane3:A549 whole cell lysate(40ug)

Lane4:Hela whole cell lysate(40ug)

Lane5:HepG2 whole cell lysate(40ug)

Lane6:SHSY5Y whole cell lysate(60ug)

Lane7:EC9706 whole cell lysate(30ug)



Immunofluorescence analysis of MCF-7 cells using NFKB-p65 anti-

body at dilution of 1:50.

For research use only, not for use in diagnostic procedure.

Note: