

## NFκB-p105 (phospho-S927) polyclonal antibody

Catalog: BCP01185

Host: Rabbit

Reactivity: Human, Mouse, Rat

### BackGround:

Proteins encoded by the v-Rel viral oncogene and its cellular homolog, c-Rel, are members of a family of transcription factors that include the two subunits of the transcription factor NFκB (p50 and p65) and the Drosophila maternal morphogen, dorsal. The DNA binding activity of NFκB is activated and NFκB is subsequently transported from the cytoplasm to the nucleus in cells exposed to mitogens or growth factors. cDNAs encoding precursors for two distinct proteins of the same size have been described, designated p105 and p100. The p105 precursor contains p50 at its N-terminus and a C-terminal region that when expressed as a separate molecule, designated pI, binds to p50 and regulates its activity

### Product:

Rabbit IgG, 1mg/ml in PBS with 0.02% sodium azide, 50% glycerol, pH7.2

### Molecular Weight:

~ 105 kDa

### Swiss-Prot:

P19838

### Purification&Purity:

The antibody was affinity-purified from rabbit antiserum by affinity-chromatography using epitope-specific immunogen and the purity is > 95% (by SDS-PAGE).

### Applications:

WB: 1:500~1:1000

IHC: 1:50~1:200

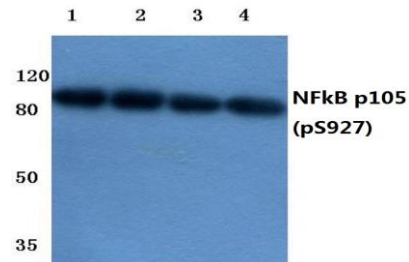
### Storage&Stability:

Store at 4 °C short term. Aliquot and store at -20 °C long term. Avoid freeze-thaw cycles.

### Specificity:

p-NFκB-p105 (S927) polyclonal antibody detects endogenous levels of NFκB-p105 protein only when phosphorylated at Ser927.

### DATA:



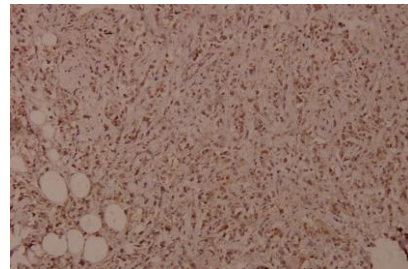
Western blot (WB) analysis of p-NFκB-p105 (S927) pAb at 1:500 dilution

Lane1:SGC7901 whole cell lysate(40ug)

Lane2:Hela whole cell lysate(40ug)

Lane3:The Spleen tissue lysate of Rat(40ug)

Lane4:The Testis tissue lysate of Mouse(40ug)



Immunohistochemistry (IHC) analyzes of p-NFκB-p105 (S927) pAb in paraffin-embedded human breast carcinoma tissue at 1:100.

### Note:

For research use only, not for use in diagnostic procedure.