

## NF2/Merlin (phospho-S518) polyclonal antibody

Catalog: BCP01180

Host: Rabbit

Reactivity: Human,Mouse,Rat

### BackGround:

Neurofibromin 2 (NF2) is a tumor suppressor gene encoding the protein Merlin. Merlin is closely related to the ERM (ezrin, radixin, moesin) family of proteins. The precise function of Merlin is not clear. It is thought to provide a link between the actin cytoskeleton and membrane associated proteins, playing a role in transduction of extracellular signals. It has been implicated in cell proliferation and cellular motility. Mutations in the NF2 gene cause neurofibromatosis type II, a condition characterised by the development of tumors in the central nervous system.

### Product:

Rabbit IgG, 1mg/ml in PBS with 0.02% sodium azide, 50% glycerol, pH7.2

### Molecular Weight:

~ 70 kDa

### Swiss-Prot:

P35240

### Purification&Purity:

The antibody was affinity-purified from rabbit antiserum by affinity-chromatography using epitope-specific immunogen and the purity is > 95% (by SDS-PAGE).

### Applications:

WB: 1:500~1:1000

IF: 1:50~1:200

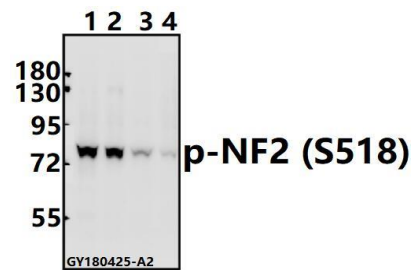
### Storage&Stability:

Store at 4 °C short term. Aliquot and store at -20 °C long term. Avoid freeze-thaw cycles.

### Specificity:

p-NF2/Merlin (S518) polyclonal antibody detects endogenous levels of NF2/Merlin protein only when phosphorylated at Ser518

### DATA:



Western blot (WB) analysis of p-NF2 (S518) pAb at 1:500 dilution

Lane1:A375 whole cell lysate(40ug)

Lane2:HeLa whole cell lysate(40ug)

Lane3:The Uterus tissue lysate of Rat(40ug)

Lane4:CT26 whole cell lysate(40ug)

### Note:

For research use only, not for use in diagnostic procedure.