

NDUFA8 (P141) polyclonal antibody

Catalog: BCP01168

Host: Rabbit

Reactivity: Human,Mouse,Rat

BackGround:

NDUFA8 is an accessory subunit of the mitochondrial membrane respiratory chain NADH dehydrogenase (Complex I), that is believed to be not involved in catalysis. Mammalian complex I is composed of 45 different subunits and transfers electrons from NADH to the respiratory chain. The immediate electron acceptor for the enzyme is believed to be ubiquinone.

Product:

Rabbit IgG, 1mg/ml in PBS with 0.02% sodium azide, 50% glycerol, pH7.2

Molecular Weight:

~ 22 kDa

Swiss-Prot:

P51970

Purification&Purity:

The antibody was affinity-purified from rabbit antiserum by affinity-chromatography using epitope-specific immunogen and the purity is > 95% (by SDS-PAGE).

Applications:

WB: 1:500~1:1000

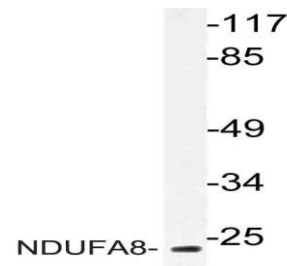
IHC: 1:50~1:200

Storage&Stability:

Store at 4 °C short term. Aliquot and store at -20 °C long term. Avoid freeze-thaw cycles.

Specificity:

NDUFA8 (P141) polyclonal antibody detects endogenous levels of NDUFA8 protein.

DATA:

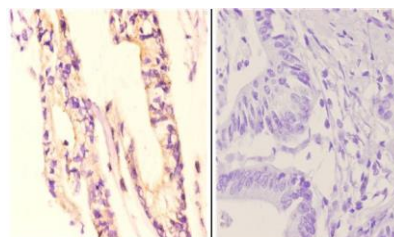
Western blot (WB) analysis of NDUFA8 (P141) polyclonal antibody at 1:500 dilution

Lane1:C6 whole cell lysate(40ug)

Lane2:AML-12 whole cell lysate(40ug)

Lane3:HEK293T whole cell lysate(40ug)

Lane4:L02 whole cell lysate(40ug)



Immunohistochemistry (IHC) analyzes of NDUFA8 (P141) pAb in paraffin-embedded human colon carcinoma tissue at 1:50, showing strong cytoplasmic staining. Negative control (the right) Using PBS instead of primary antibody, secondary antibody is Goat Anti-Rabbit IgG-biotin followed by avidin-peroxidase.

Note:

For research use only, not for use in diagnostic procedure.