

MYLPF (D23) polyclonal antibody

Catalog: BCP01155

Host: Rabbit

Reactivity: Human,Mouse,Rat

BackGround:

MYLPF (myosin light chain, phosphorylatable, fast skeletal muscle), also known as fast skeletal myosin light chain 2 or MLC2B, is a 169 amino acid protein that is expressed in fetal and adult skeletal muscle. A calcium binding protein, MYLPF contains three EF hand domains and is encoded by a gene that maps to human chromosome 16p11.2. Chromosome 16 encodes over 900 genes in approximately 90 million base pairs, makes up nearly 3% of human cellular DNA and is associated with a variety of genetic disorders. The GAN gene is located on chromosome 16 and, with mutation, may lead to giant axonal neuropathy, a nervous system disorder characterized by increasing malfunction with growth.

Product:

Rabbit IgG, 1mg/ml in PBS with 0.02% sodium azide, 50% glycerol, pH7.2

Molecular Weight:

~ 19 kDa

Swiss-Prot:

Q96A32

Purification&Purity:

The antibody was affinity-purified from rabbit antiserum by affinity-chromatography using epitope-specific immunogen and the purity is > 95% (by SDS-PAGE).

Applications:

WB: 1:500~1:1000

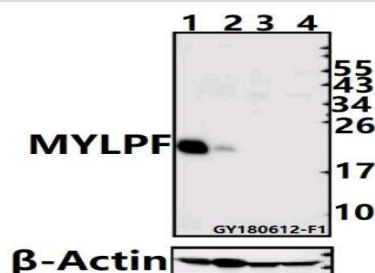
Storage&Stability:

Store at 4 °C short term. Aliquot and store at -20 °C long term. Avoid freeze-thaw cycles.

Specificity:

MYLPF (D23) polyclonal antibody detects endogenous levels of MYLPF protein.

DATA:



Western blot (WB) analysis of MYLPF (D23) pAb at 1:500 dilution

Lane1:The Muscle tissue lysate of Mouse(40ug)

Lane2:The Muscle tissue lysate of Rat(40ug)

Lane3:LOVO whole cell lysate(40ug)

Lane4:H1792 whole cell lysate(40ug)

Note:

For research use only, not for use in diagnostic procedure.