

MUC20 polyclonal antibody

Catalog: BCP01148

Host: Rabbit

Reactivity: Human,Mouse,Rat

BackGround:

Mucins are a family of high molecular weight, heavily glycosylated proteins (glycoconjugates) produced by epithelial tissues in most organisms of Kingdom Animalia. Mucins' key characteristic is their ability to form gels; therefore they are a key component in most gel-like secretions, serving functions from lubrication to cell signaling to forming chemical barriers. They often take an inhibitory role. Some mucins are associated with controlling mineralization, including nacre formation in mollusks, calcification in echinoderms and bone formation in vertebrates. They bind to pathogens as part of the immune system. Overexpression of the mucin proteins, especially MUC1, is associated with many types of cancer.

Product:

Rabbit IgG, 1mg/ml in PBS with 0.02% sodium azide, 50% glycerol, pH7.2

Molecular Weight:

~ 100 kDa

Swiss-Prot:

Q8N307

Purification&Purity:

The antibody was affinity-purified from rabbit antiserum by affinity-chromatography using epitope-specific immunogen and the purity is > 95% (by SDS-PAGE)

Applications:

WB: 1:500~1:1000

IHC: 1:50~1:200

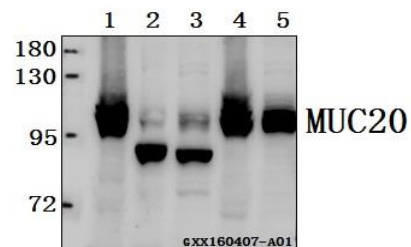
Storage&Stability:

Store at 4 °C short term. Aliquot and store at -20 °C long term. Avoid freeze-thaw cycles.

Specificity:

MUC20 polyclonal antibody detects endogenous levels of MUC20 protein.

DATA:



Western blot (WB) analysis of MUC20 polyclonal antibody at 1:500 dilution

Lane1:HEK293T whole cell lysate(40ug)

Lane2:The kidney tissue lysate of Mouse(40ug)

Lane3:The kidney tissue lysate of Rat(40ug)

Lane4:A549 whole cell lysate(40ug)

Lane5:L02 whole cell lysate(40ug)

Note:

For research use only, not for use in diagnostic procedure.