

MSK1 (Q577) polyclonal antibody

Catalog: BCP01141

Host: Rabbit

Reactivity: Human, Mouse, Rat

Background:

MSK-1 is a mitogen and stress activated protein kinase-1 which belongs to the AGC family of kinases and is related in structure to the ribosomal p70 S6 kinase subfamily. MSK-1 can be activated by ERK1/2 and SAPK2 /p38 MAP kinase. It is also known to be required for the phosphorylation of CREB, ATF1 H3 and HMG-14 in response to mitogen and stress. Similar to RSK, MSK-1 contains two kinase domains (N-term and a C-term). Once phosphorylated on Thr581 and Ser360 by ERK1/2 and SAPK2/p38, MSK-1 autophosphorylates on at least 5 sites. Of these autophosphorylation sites Ser212 and Ser376 get phosphorylated by the C-terminal kinase domain of MSK-1 which is essential for the catalytic activity of the N-terminal kinase domain.

Product:

Rabbit IgG, 1mg/ml in PBS with 0.02% sodium azide, 50% glycerol, pH7.2

Molecular Weight:

~ 90 kDa

Swiss-Prot:

O75582

Purification&Purity:

The antibody was affinity-purified from rabbit antiserum by affinity-chromatography using epitope-specific immunogen and the purity is > 95% (by SDS-PAGE).

Applications:

WB: 1:500~1:1000

IHC: 1:50~1:200

IF: 1:50~1:200

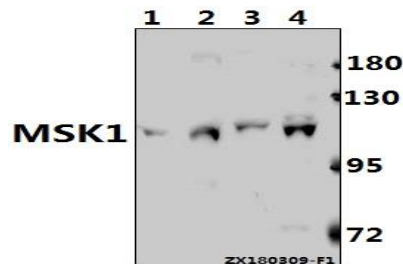
Storage&Stability:

Store at 4 °C short term. Aliquot and store at -20 °C long term. Avoid freeze-thaw cycles.

Specificity:

MSK1 (Q577) polyclonal antibody detects endogenous levels of MSK1 protein.

DATA:



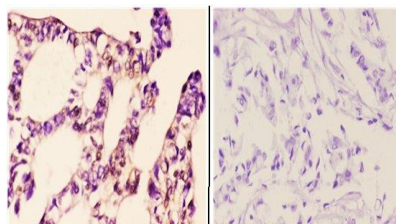
Western blot (WB) analysis of MSK1 (Q577) pAb at 1:500 dilution

Lane1:C6 whole cell lysate(40ug)

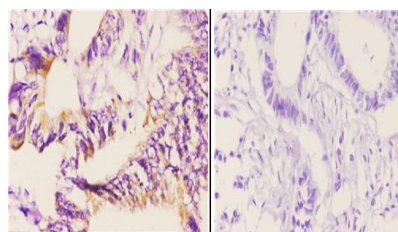
Lane2:AML-12 whole cell lysate(40ug)

Lane3:A2780 whole cell lysate(40ug)

Lane4:HEK293T whole cell lysate(40ug)



Immunohistochemistry (IHC) analyzes of MSK1 (Q577) pAb in paraffin-embedded human breast carcinoma tissue at 1:50. showing Nucleus and Cytoplasm staining. Negative control (the right) Using PBS instead of primary antibody, secondary antibody is Goat Anti-Rabbit IgG-biotin followed by avidin-peroxidase.



BS1824
Lot CA36131

Immunohistochemistry (IHC) analyzes of MSK1 (Q577) pAb in paraffin-embedded human breast carcinoma tissue at 1:50. showing Nucleus and Cytoplasm staining. Negative control (the right) Using PBS instead of primary antibody, secondary antibody is Goat Anti-Rabbit IgG-biotin followed by avidin-peroxidase.

Note:

For research use only, not for use in diagnostic procedure.