

## MRP-S9 (F132) polyclonal antibody

Catalog: BCP01137

Host: Rabbit

Reactivity: Human

### BackGround:

Mammalian mitochondrial ribosomes (mitoribosomes) are responsible for protein synthesis within the mitochondrion. The mitoribosomes are composed of a 4:1 ratio of protein to RNA, with the proteins forming two subunits, the 28S subunit and the 39S subunit. Across species, the proteins that make up the mitoribosome subunits vary greatly in sequence, preventing easy recognition by sequence homology. MRP-S9 (mitochondrial 28S ribosomal protein S9), also known as RPMS9, is a 396 amino acid mitochondrial ribosomal protein. Localized to mitochondria, MRP-S9 is present in the 28S subunit of the mitoribosomes, which comprises a 12S rRNA and at least 30 distinct proteins.

### Product:

Rabbit IgG, 1mg/ml in PBS with 0.02% sodium azide, 50% glycerol, pH7.2

### Molecular Weight:

~ 46 kDa

### Swiss-Prot:

P82933

### Purification&Purity:

The antibody was affinity-purified from rabbit antiserum by affinity-chromatography using epitope-specific immunogen and the purity is > 95% (by SDS-PAGE).

### Applications:

WB: 1:500~1:1000

IHC: 1:50~1:200

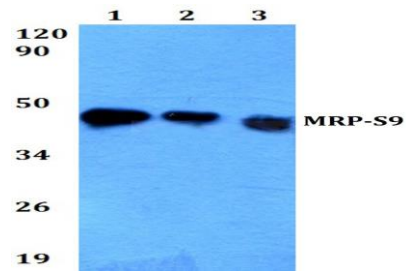
### Storage&Stability:

Store at 4 °C short term. Aliquot and store at -20 °C long term. Avoid freeze-thaw cycles.

### Specificity:

MRP-S9 (F132) polyclonal antibody detects endogenous levels of MRP-S9 protein.

### DATA:

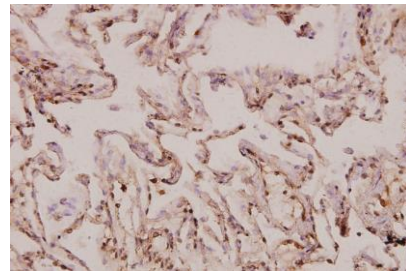


Western blot (WB) analysis of MRP-S9 (F132) pAb at 1:500 dilution

Lane1:HepG2 whole cell lysate(40ug)

Lane2:HEK293T whole cell lysate(40ug)

Lane3:PC3 whole cell lysate(40ug)



Immunohistochemistry (IHC) analyzes of MRP-S9 (F132) pAb in paraffin-embedded human lung carcinoma tissue at 1:100.

### Note:

For research use only, not for use in diagnostic procedure.