

## MRPL51 polyclonal antibody

Catalog: BCP01130

Host: Rabbit

Reactivity: Human,Mouse,Rat

### BackGround:

Mammalian mitochondrial ribosomes (mitoribosomes) are responsible for protein synthesis within the mitochondrion. The mitoribosomes are composed of a 4:1 ratio of protein to RNA, with the proteins forming two subunits, the 28S subunit and the 39S subunit. Across species, the proteins that make up the mitoribosome subunits vary greatly in sequence, preventing easy recognition by sequence homology. MRP-L51(mitochondrial ribosomal protein L51), also known as CDA09, MRP64, bMRP64 or HSPC241, is a 128 amino acid mitochondrial ribosomal protein. MRP-L51 is a component of the mitochondrial ribosome large subunit (39S) which consists of a 16S rRNA and about 50 distinct proteins

### Product:

Rabbit IgG, 1mg/ml in PBS with 0.02% sodium azide, 50% glycerol, pH7.2

### Molecular Weight:

~ 15 kDa

### Swiss-Prot:

Q4U2R6

### Purification&Purity:

The antibody was affinity-purified from rabbit antiserum by affinity-chromatography using epitope-specific immunogen and the purity is > 96% (by SDS-PAGE).

### Applications:

WB: 1:500~1:1000

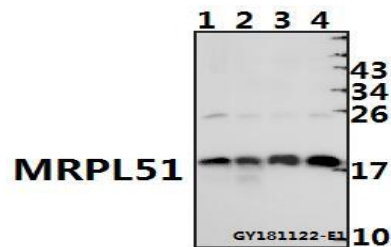
### Storage&Stability:

Store at 4 °C short term. Aliquot and store at -20 °C long term. Avoid freeze-thaw cycles.

### Specificity:

MRPL51 polyclonal antibody detects endogenous levels of MRPL51 protein.

### DATA:



Western blot (WB) analysis of MRPL51 pAb at 1:3000 dilution

Lane1:AML-12 whole cell lysate(40ug)

Lane2:PC12 whole cell lysate(40ug)

Lane3:Beas-2B whole cell lysate(40ug)

Lane4:L02 whole cell lysate(40ug)

### Note:

For research use only, not for use in diagnostic procedure.