

MRPL46 polyclonal antibody

Catalog: BCP01129

Host: Rabbit

Reactivity: Human,Mouse,Rat

BackGround:

The Clustered Regularly Interspaced Short Palindromic Repeats (CRISPR) and CRISPR-associated protein (Cas9) system is an adaptive immune response defense mechanism used by archea and bacteria for the degradation of foreign genetic material. This mechanism can be repurposed for other functions, including genomic engineering for mammalian systems, such as gene knockout (KO). CRISPR/Cas9 KO Plasmid products enable the identification and cleavage of specific genes by utilizing guide RNA (gRNA) sequences derived from the Genome-scale CRISPR Knock-Out (GeCKO).

Product:

Rabbit IgG, 1mg/ml in PBS with 0.02% sodium azide, 50% glycerol, pH7.2

Molecular Weight:

~ 31 kDa

Swiss-Prot:

Q9H2W6

Purification&Purity:

The antibody was affinity-purified from rabbit antiserum by affinity-chromatography using epitope-specific immunogen and the purity is > 102% (by SDS-PAGE).

Applications:

WB: 1:500~1:1000

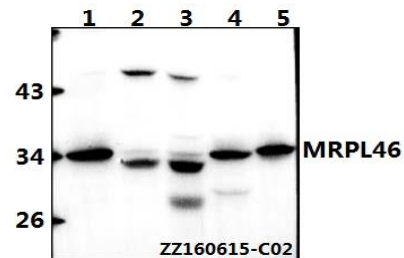
Storage&Stability:

Store at 4 °C short term. Aliquot and store at -20 °C long term. Avoid freeze-thaw cycles.

Specificity:

MRPL46 polyclonal antibody detects endogenous levels of MRPL46 protein.

DATA:



Western blot (WB) analysis of MRPL46 polyclonal antibody at 1:500 dilution

Lane1:HeLa whole cell lysate(40ug)

Lane2:A549 whole cell lysate(40ug)

Lane3:HEK293T whole cell lysate(40ug)

Lane4:PC12 whole cell lysate(40ug)

Lane5:RAW264.7 whole cell lysate(40ug)

Note:

For research use only, not for use in diagnostic procedure.