

MRP8 polyclonal antibody

Catalog: BCP01119

Host: Rabbit

Reactivity: Human,Mouse,Rat

BackGround:

The family of EF-hand type Ca²⁺-binding proteins includes Calbindin (previously designated vitamin D-dependent Ca²⁺-binding protein), S-100 α and β , Cal-granulins A (also designated MRP8), B (also designated MRP14) and C (S-100 like proteins) and the parvalbumin family members, including parvalbumin α and parvalbumin β (also designated oncomodulin). Calbindin, S-100 proteins and parvalbumin proteins are each expressed in neural tissues. In addition, S-100 α and β are present in a variety of other tissues and Calbindin is present in intestine and kidney. Parvalbumin α is also found in fast-contracting/relaxing skeletal muscle fibers and parvalbumin β is found in many tumor tissues as well as in the organ of Corti.

Product:

Rabbit IgG, 1mg/ml in PBS with 0.02% sodium azide, 50% glycerol, pH7.2

Molecular Weight:

~ 23 kDa

Swiss-Prot:

P05109

Purification&Purity:

The antibody was affinity-purified from rabbit antiserum by affinity-chromatography using epitope-specific immunogen and the purity is > 101% (by SDS-PAGE).

Applications:

WB:1:500~1:1000

IHC:1:50~1:200

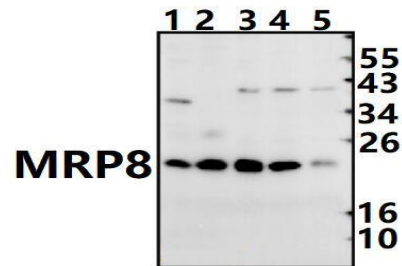
Storage&Stability:

Store at 4 °C short term. Aliquot and store at -20 °C long term. Avoid freeze-thaw cycles.

Specificity:

MRP8 polyclonal antibody detects endogenous levels of MRP8 protein.

DATA:



Western blot (WB) analysis of MRP8 pAb at 1:500 dilution

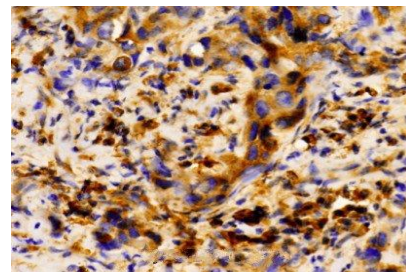
Lane1:PC12 whole cell lysate(40ug)

Lane2:SP2/0 whole cell lysate(40ug)

Lane3:EC9706 whole cell lysate(40ug)

Lane4:A375 whole cell lysate(40ug)

Lane5:HCC827 whole cell lysate(40ug)



Immunohistochemistry (IHC) analyzes of MRP8 pAb in paraffin-embedded human breast carcinoma tissue at 1:100.

Note:

For research use only, not for use in diagnostic procedure.