

MOL2C polyclonal antibody

Catalog: BCP01111

Host: Rabbit

Reactivity: Human,Mouse,Rat

BackGround:

May regulate the activity of kinases By similarity.

Product:

Rabbit IgG, 1mg/ml in PBS with 0.02% sodium azide, 50% glycerol, pH7.2

Molecular Weight:

~ 25 kDa

Swiss-Prot:

Q70IA8

Purification&Purity:

The antibody was affinity-purified from rabbit antiserum by affinity-chromatography using epitope-specific immunogen and the purity is > 95% (by SDS-PAGE).

Applications:

WB: 1:500~1:1000

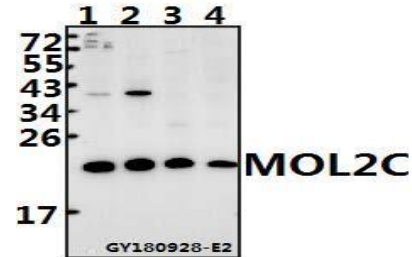
Storage&Stability:

Store at 4 °C short term. Aliquot and store at -20 °C long term. Avoid freeze-thaw cycles.

Specificity:

MOL2C polyclonal antibody detects endogenous levels

of MOL2C protein.

DATA:

Western blot (WB) analysis of MOL2C polyclonal antibody at 1:500 dilution

Lane1:The Embryo tissue lysate of Mouse(40ug)

Lane2:The Thymus tissue lysate of Rat(40ug)

Lane3:LOVO whole cell lysate(40ug)

Lane4:U-87MG whole cell lysate(40ug)

Note:

For research use only, not for use in diagnostic procedure.